

# TEMPSEN

## ITAG-SingleUse Temperature Label *User Manual*



Manufactured by TempSen Electronics Company  
©2009 TempSen

The information contained within this document regarding ITAG -SingleUse Temperature Label usage is intended as a guide and does not constitute a declaration of performance. The information contained in this document is subject to change without notice. Unless otherwise noted, the example companies, organizations, e-mail addresses and people depicted herein are fictitious, and no association with any real company, organization, e-mail address or person is intended or should be inferred. Complying with all applicable copyright laws is the responsibility of the user.

No representation or warranty is given and no liability is assumed by TempSen with respect to the accuracy or use of such information or infringement of patents or other intellectual property rights arising from such use or otherwise.

Copyright © 2007-2009 TempSen Electronics Company. All rights reserved.  
[www.tempsen.com](http://www.tempsen.com)

# Contents

## Operating Instructions

Using ITAG-SingleUse Temperature Label.....	1
LED Indicators.....	2

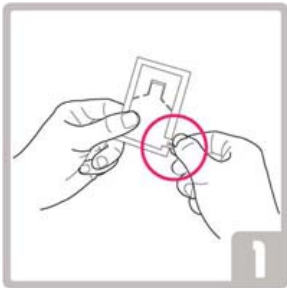
## Software Usage

System Requirements.....	3
Installing ITAGSU E2E (EN).....	4
Downloading Data.....	5

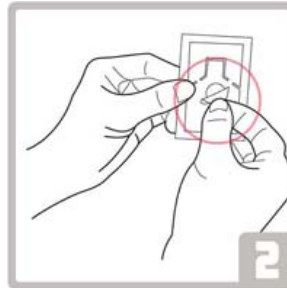
# Operating Instructions

## Using ITAG-SingleUse Temperature Label

ITAG-SingleUse Temperature Label is a pre-programmed temperature logger, so you don't need to configure it before using.



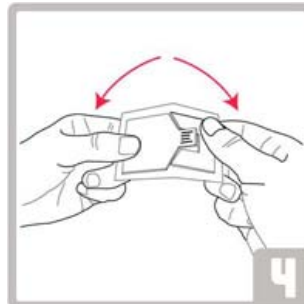
1. Tear STRAT-STRIP to activate ITAG-SingleUse label



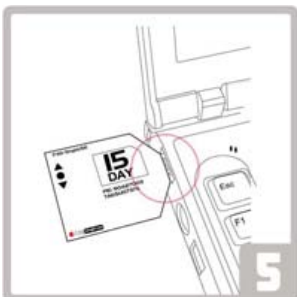
2. Peel plastic off of glue dot on back of label



3. Adhere ITAG-SingleUse To the paper marked "Temperature Monitoring", then Place paper into protective sleeve



4. Snap ITAG-SingleUse to stop recording, then the USB plug appears



5. Connect ITAG-SingleUse To USB port on PC to Download data

LED Indicators



LED Indicators are on the left part of ITAG-SingleUse Temperature Label

	over xx°C---- upper limit 30min-----Time Limit
	under xx°C----lower limit 30min-----Time Limit

	<b>Working normally</b> Yellow LED Flash Every 10sec

	<b>Over Upper Limit/Not Over Time</b> Red and Yellow LED Flash Every 10sec

	<b>Over Upper Limit/Over Time</b> Red LED Flash Every 10sec

	<b>Under Lower Limit/Not Over Time</b> Blue and Yellow LED Flash Every 10sec

	<b>Under Lower Limit/Over Time</b> Blue LED Flash Every 10sec

*\* All LEDs flash in turn for five times When ITAG-SingleUse is started*

*\* All LEDs light when ITAG-SingleUse label is connecting to computer*

# Software Usage

## System Requirements

### *The minimum specifications are:*

- Pentium II 233MHz processor
- 64MB RAM
- 20MB free disk space
- Windows NT, Windows 2000, Windows XP, Windows Vista
- Windows office 2003 or later
- 1 available USB port
- 800 x 600 screen resolution
- 256 screen colors.

### *The recommended specifications are:*

- Windows 2000, Windows XP
- 65535 (16bit), or more, screen colors.
- 1024 x 768, or higher, screen resolution.

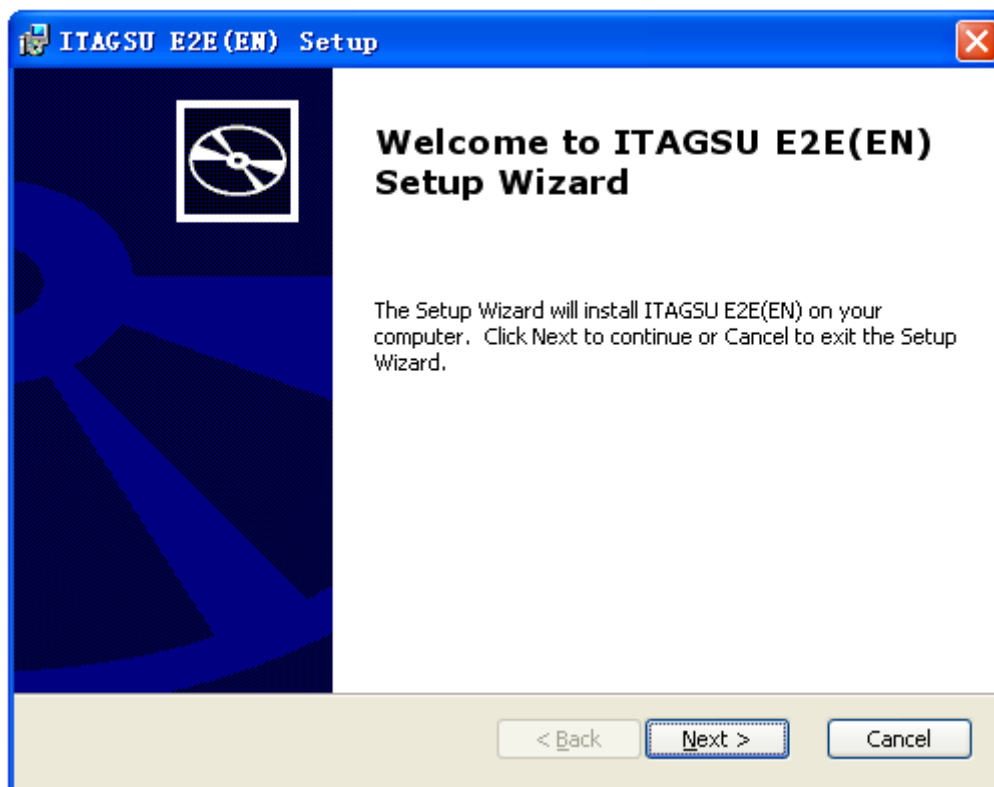
## Installing ITAGSU E2E (EN)

First, You need to download free ITAGSU E2E(EN) setup software from [www.tempsen.com/en](http://www.tempsen.com/en)

Once ITAGSU E2E (EN) was completely downloaded, click the following icon to start installing process.



### ITAGSU E2E(EN) Setup Wizard



*Figure 1, click Next*

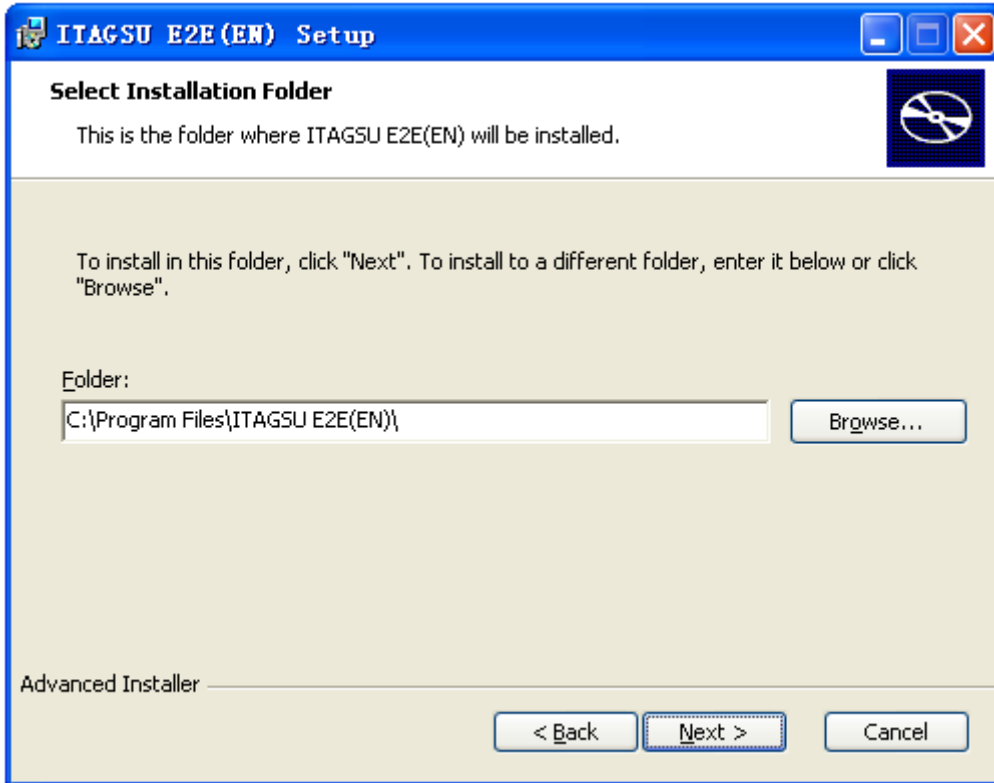


Figure2, Choose a folder where ITAGSU E2E (EN) will be installed

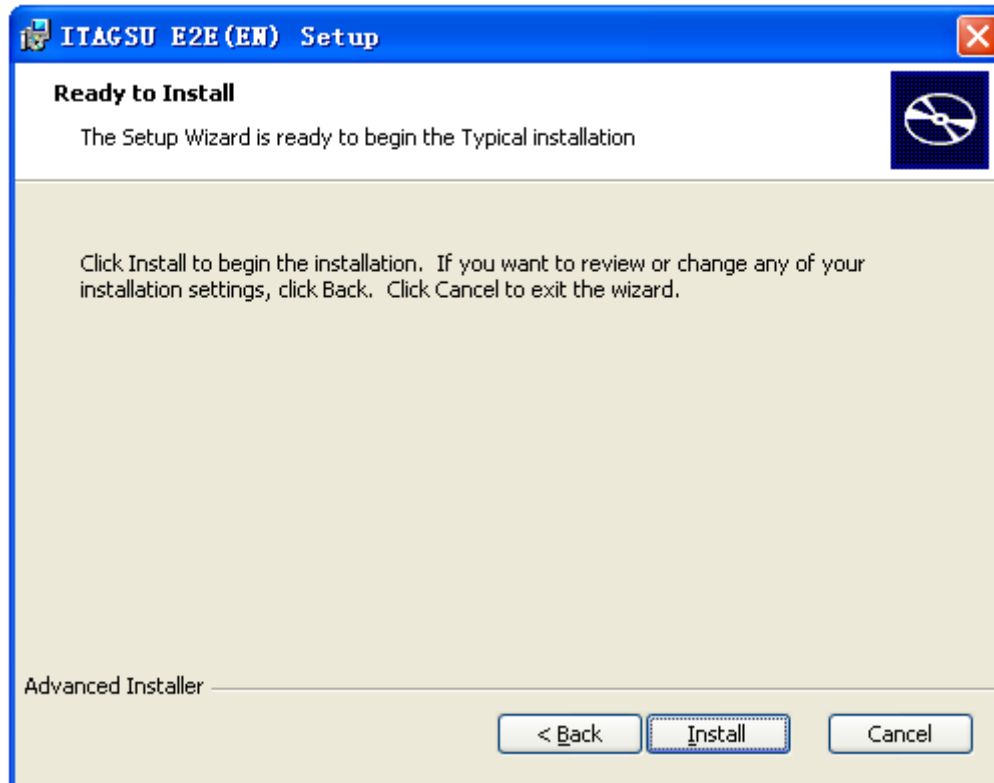


Figure3, Click Install to begin installation

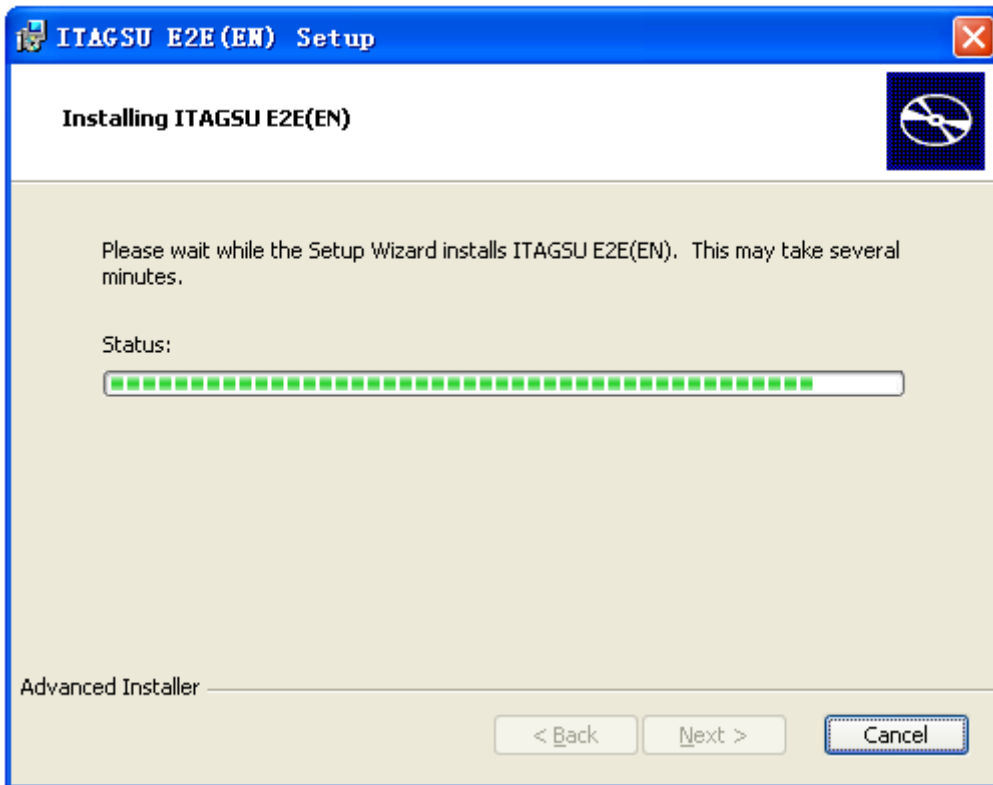


Figure 5, Installing

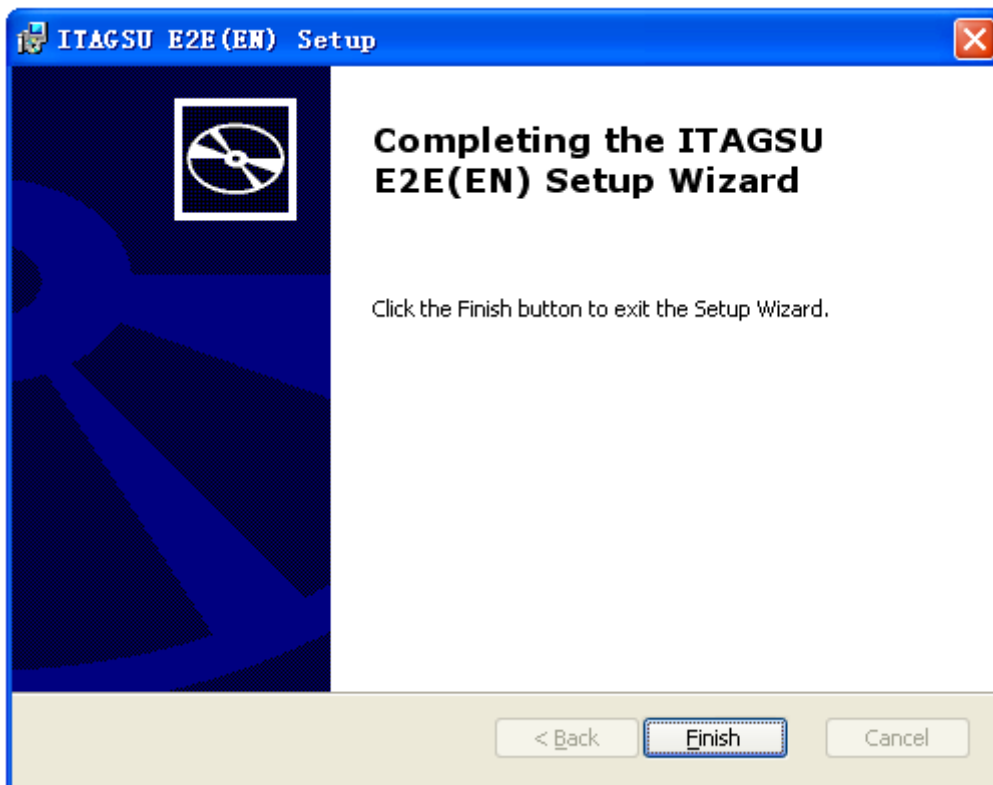


Figure 6, Click finish to exit setup wizard

### Downloading Data

Before downloading data stored in ITAG-SingleUse temperature label to computer, make sure your labels were connected to computer before ITAGSU\_E2E\_EN.exe application is opened.

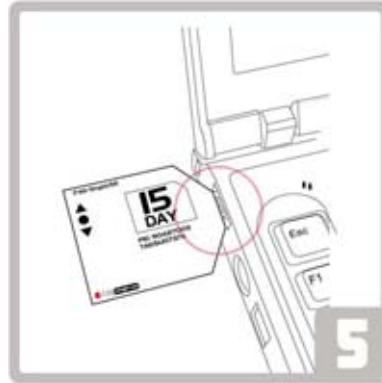
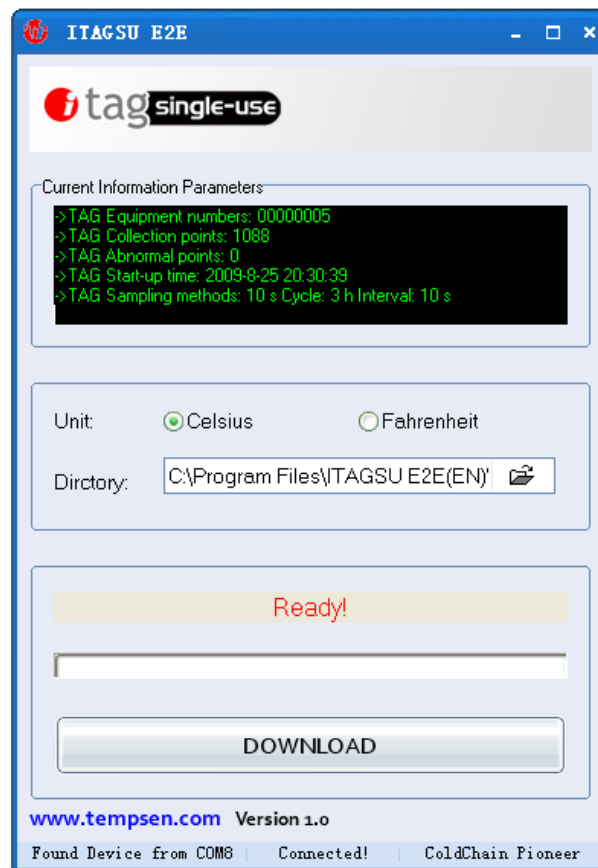


Figure 7, Connect label to USB port on computer

Click ITAGSU\_E2E\_EN.exe icon  located on desktop to start application

Until you see a pop-up note in the lower-right corner of the screen (This note only shows one time after software was just installed), saying that your computer has detected the new hardware and it's ready to use, you can download data by clicking the DOWNLOAD button.



TempSen is the world's leading supplier of portable data loggers and monitoring systems

For more information please call 86-216768-5210 or visit [www.tempsen.com](http://www.tempsen.com)

All Rights Reserved. All trademarks and service marks are the property of Tempsen Electronics Company.

**Tel:+86-21-6768-5210 Fax:+86-21-6768-5232 Email:[info@tempsen.com](mailto:info@tempsen.com) [www.tempsen.com](http://www.tempsen.com)**