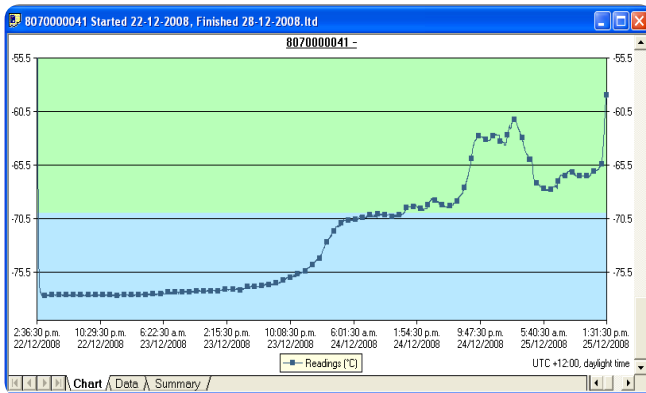


LogTag

DRY ICE PROBE-LESS LOW TEMPERATURE RECORDER



The LogTag Dry Ice “Probe-less” Temperature Recorder operates, measures and stores up to 8000 temperature readings in temperature environments ranging from -80°C to +40°C (-112°F to +104°F).

Intended for use in transit monitoring of articles stored in packaging incorporating dry ice cooling agents.

Available in single trip (SRIL-8) and multiple trip (TRIL-8) versions.

Using the LogTag Interface and LogTag’s freely available companion software LogTag Analyser, the LogTag Dry Ice Temperature Recorder is easily configured for recording conditions including delayed start, sampling interval, number of readings and configuration of conditions to activate the ALERT indicator.

The Red Alert indicator provides an immediate indication, without access to a PC, if any readings are outside the limits specified at the time the unit was configured. Green OK indicator provides immediate visual confirmation, without access to a PC, that the unit is operating.

Readings are downloaded using LogTag Analyser which provides facilities for charting, zooming, listing data statistics and allows exporting the data to other applications such as Excel.

The product incorporates an external temperature sensor uniquely arranged in a recess in the case. This arrangement protects the sensor from physical damage while retaining the faster response time normally associated with remote sensors.

Product Highlights

- **Alert indicator** – indicates if readings are outside of preset limits
- **OK indicator** indicates if still recording and if readings within configured limits
- **Inspection mark** in log by push button
- **Push Button** Logging start with optional delayed start or specific **Time & Date start**
- **Rapid Download!** Takes only seconds to download recordings
- **‘Pre-Start’ logging** - Logtag can be configured to record even if it has not been started.
- **High performance** at low cost
- **Credit card sized case** – thin enough to be easily mailed “letter rate”.
- **Real time clock** records time & temperature simultaneously
- **Easy to use** LogTag Analyser software that runs on any PC configures LogTag for recording then downloads resulting data for analysis.
Data can also be exported to formats compatible with other applications such as Excel
- **Re-calibration** to achieve higher accuracy possible