

# Setting the TR-7W IP Address

## I) Initialization

1. Load the TR-7W Settings Utility software on your PC.

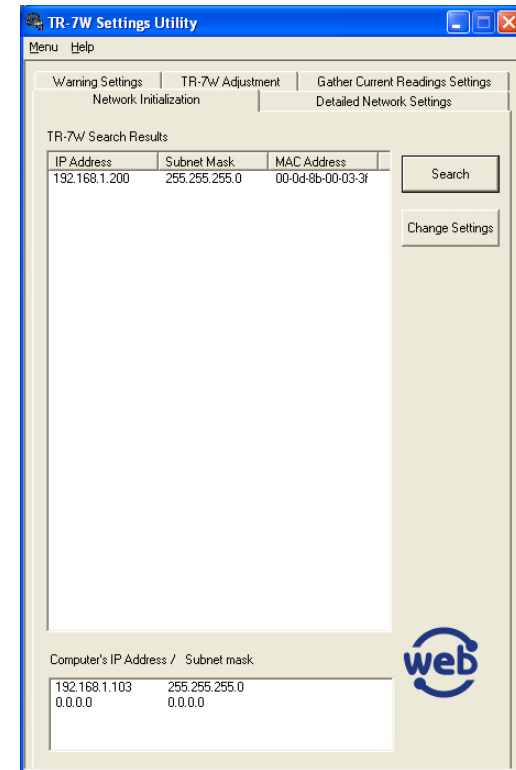
## A) LAN Method

2. Connect the TR-7W to your LAN.
3. Open the TR-7W Settings Utility software.
4. Select the “Network Initialization” tab.
5. Click on the “Search” button.
6. The search results should show the connected unit.
7. If so, proceed to Detailed Network Settings.
8. If not, the factory preconfigured IP address may not be within the range recognizable by your router; go to PC Direct Method.

## B) PC Direct Method

1. Configure your PC's for a fixed IP address for direct connection. Go to:  
Control Panel> Network Connections>LAN Connections>Properties  
Select: TCP/IP> Properties> IP Address> Enter: 192.168.1.100
2. Connect the TR-7W to the PC with a “cross connect” cable.
3. Open the TR-7W Settings Utility software.
4. Click on the “Search” button.
5. Proceed to Detailed Network Settings (make sure to reset the IP address of your PC to the normal setting when finished configuring the TR-7W).

TR-7W Network Initialization Window



## II) Detailed Network Settings

1. Click on the Detailed Network Settings tab.
2. Ensure that the IP address reflects the unit to be configured.
3. Enter the default Login ID and Password, and set the Port to 80.
4. Click on the “Get Settings” button.
5. The unit’s pre-configured settings will populate the window.
6. Click the “Change Settings” button.
7. Enter the new IP address, subnet mask and gateway\*.
8. Enter the new Login ID and Password.
9. Click the “Send Settings” button.

## III) Confirm Settings

1. Click “Get Settings” button.
2. Confirm data retrieved from unit is correct as entered.

Change Settings Window

Detailed network Settings

IP Address: 192.168.1.200    Login ID: wsc-user  
 Subnet Mask: 255.255.255.0    Login Password: wsc-passwd  
 Gateway Address: 192.168.1.1

DNS Settings:  ON  OFF  
 DNS server address(Primary): 24.92.226.9  
 DNS server address(Secondary):

SNTP Settings:  ON  OFF  
 SNTP server address(Primary):  
 SNTP server address(Secondary):

IP Block:  ON  OFF  
 Login Permission address 1:  
 Login Permission address 2:  
 Login Permission address 3:

Warning Report Mail: SMTP server name: smtp.nycap.rr.com

Wireless LAN Settings:  ON  OFF  
 Wireless LAN ESS-ID: Linksys1  
 Wireless LAN WEP Key Type: Character string  
 Wireless LAN WEP Key Code:

Port Number: HTTP 80    Time Difference: GMT -05:00

Recipient:  Domain  
 IP Address: 192.168.1.200  
 Login ID: wsc-user  
 Login Password: \*\*\*\*\*    Port Number: 80

Buttons: Send Settings, Help, Re-Activate Communication, Close

TR-7W Detailed Settings Window

TR-7W Settings Utility

Warning Settings | TR-7W Adjustment | Gather Current Readings Settings

Network Initialization | Detailed Network Settings

Setting Item	Settings
IP Address	192.168.1.200
Subnet Mask	255.255.255.0
Gateway Address	192.168.1.1
DHCP Settings	off
DNS Settings	on
DNS Server Address(primary)	24.92.226.9
DNS Server Address(secondary)	
Clock Settings	off
SNTP Server Address(primary)	
SNTP Server Address(secondary)	
IP Block	off
Login Permission Address 1	
Login Permission Address 2	
Login Permission Address 3	
Login ID	wsc-user
Login Password	wsc-passwd
SMTP Server Name	smtp.nycap.rr.com
Wireless LAN Settings	on
Wireless LAN ESS-ID	Linksys1
Wireless LAN WEP Key Code	
Wireless LAN WEP Key Type(Hexa)	off
HTTP Port	80
Time Difference	-05:00

Settings History: [Dropdown]

Settings: History: 192.168.1.200  
 Domain  
 IP Address: 192.168.1.200  
 Login ID: wsc-user  
 Password: \*\*\*\*\*  
 Port Number: 80

Buttons: Get Settings, Change Settings

# Configuring Warning E-Mails

Open the TR-7W Settings Utility Software

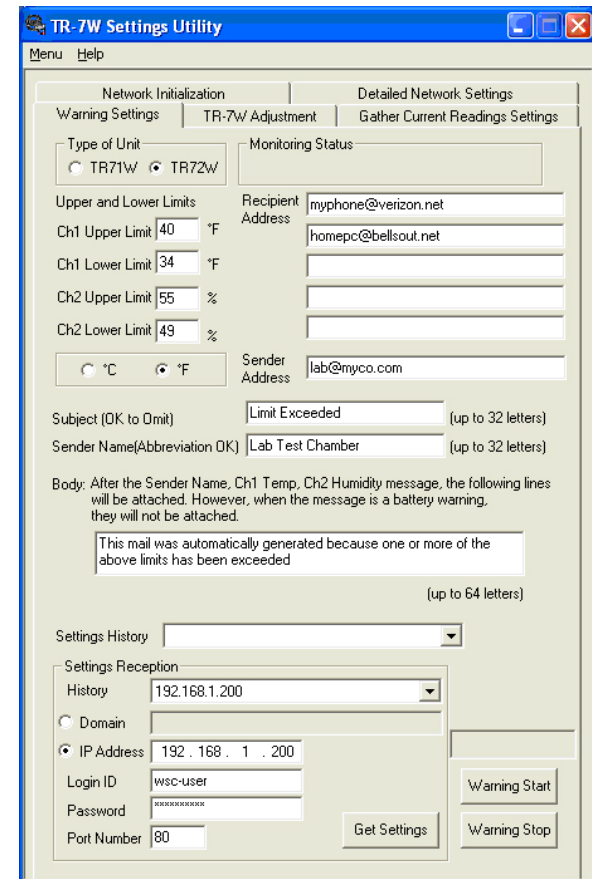
## I) Detailed Settings Window

1. Click on the “Detailed Network Settings” tab.
2. Enter the IP address, Login ID and Password for the unit to be configured.
3. Click on the “Get Settings” button.
4. Click on the “Change Settings” button.
5. Turn “DNS Settings” On.
6. Enter the IP address of your ISP’s DNS server\*.
7. Enter the name of the SMTP (outgoing mail) server you will be using.

## II) Warning Settings Window

1. Click on the “Warning Settings” tab.
2. Enter the IP address, Login ID and Password for the unit to be configured.
3. Click the “Get Settings” button.
4. Select the Type of Unit and Degrees C or F.
5. Enter the upper and / or lower limits to trigger warnings.
6. Enter the e-mail addresses (up to 5) for receipt of warning messages.
7. Enter senders e-mail address.
8. Enter subject of warning message.
9. Enter name of sender (unit originating message).
10. Enter text to be appended to message (if any).
11. Click “Warning Start” button.

TR-7W Warning Settings Window



# Connecting to a Wireless LAN

Connect the TR-7W to a LAN or PC via a wired Ethernet connection.

## I) Configure Settings

1. Open the TR-7W Settings Utility software.
2. Click in the “Detailed Network Settings” tab.
3. Enter the IP address, Login ID and Password for the unit to be configured.
4. Click on the “Get Settings” button.
5. Click on the “Change Settings” button.
6. Turn “Wireless LAN Settings” On.
7. Enter the SSID for your wireless LAN router.
8. If WEP encryption is used enter the Key Type.
9. Enter the Key Code (leave blank if no encryption is in use).
10. Click the “Send Settings” button.

## II) Confirm Settings

1. Click “Get Settings” button.
2. Confirm data retrieved from unit is correct as entered.

TR-7W Change Settings Window

The screenshot shows the 'Detailed network Settings' window for the TR-7W. The window is titled 'Detailed network Settings' and contains several sections for configuration:

- Basic Settings:** IP Address (192.168.1.200), Subnet Mask (255.255.255.0), Gateway Address (192.168.1.1), Login ID (wsc-user), and Login Password (wsc-passwd).
- DNS Settings:** Radio buttons for ON (selected) and OFF. Fields for DNS server address (Primary: 24.92.226.9) and Secondary.
- SNTP Settings:** Radio buttons for ON and OFF (selected). Fields for SNTP server address (Primary and Secondary).
- IP Block:** Radio buttons for ON and OFF (selected). Fields for Login Permission address 1, 2, and 3.
- Warning Report Mail:** SMTP server name (smtp.nyccap.ir.com).
- Wireless LAN Settings:** Radio buttons for ON (selected) and OFF. Fields for Wireless LAN ESS-ID (Linksys1), Wireless LAN WEP Key Type (Character string), and Wireless LAN WEP Key Code.
- Port Number and Time Difference:** HTTP Port Number (80) and Time Difference (GMT -05:00).
- Recipient:** Radio buttons for Domain and IP Address (selected). Fields for IP Address (192.168.1.200), Login ID (wsc-user), and Login Password (masked).

At the bottom right, there are buttons for 'Send Settings', 'Help', 'Re-Activate Communication', and 'Close'.

Disconnect the TR-7W from the wired LAN and remove power. Insert the Wireless 802.11b LAN adapter card in the CF option slot along the top edge of the unit. Reconnect the A/C adapter to the TR-7W. The LED on the CF adapter card will stop blinking when the wireless connection with the router has been established.

# Configuring the TR-7W as an Internet Server

To accomplish access from the Internet, the individual TR-7W IP addresses must be made known to the outside world, and access must be made available through the router's firewall. The problem with IP addressing is that most ISP's allocate IP addresses to clients on a temporary basis and change them from time to time. (If you have a static IP address from your ISP you may skip this section.) In order to overcome this problem, organizations such as Dynamic Network Services ([www.dyndns.org](http://www.dyndns.org)) or TZO DNS ([www.tzo.com](http://www.tzo.com)) have established services that work in conjunction with suitably equipped routers. Working together, the service and the DDNS equipped router provide a seamless domain name access to the TR-7W, even when the ISP changes the IP address of the router. Following is the procedure for setting up your TR-7W for access through the internet.

Note: The Linksys WRT54G is the router used in this example, however other DDNS equipped routers, such as those offered by SMC or Netgear can also be used.

**I) Determine that your router is DDNS capable**  
(Though the router's user guide or web page.)

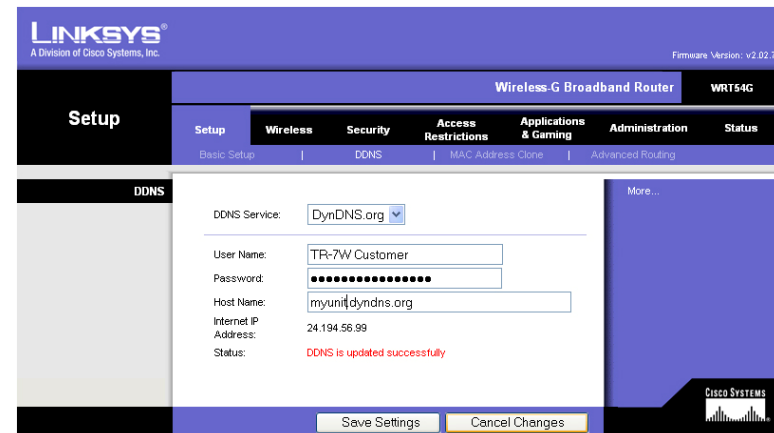
**II) Establish an account with a DDNS service**

1. Obtain a User ID & Password.
2. Register a domain name for your TR-7W.

**III) Configure your Router to Enable DDNS**

1. Open the Router's setup utility software.
2. Go to the DDNS page.
3. Enter your DDNS service account information.
4. Enter the domain name you registered for your TR-7W.

Router Setup Window



The screenshot displays the Linksys WRT54G Router Setup Window. The interface is titled "LINKSYS A Division of Cisco Systems, Inc." and "Wireless-G Broadband Router WRT54G". The "Setup" menu is active, and the "DDNS" sub-menu is selected. The DDNS configuration page shows the following fields and values:

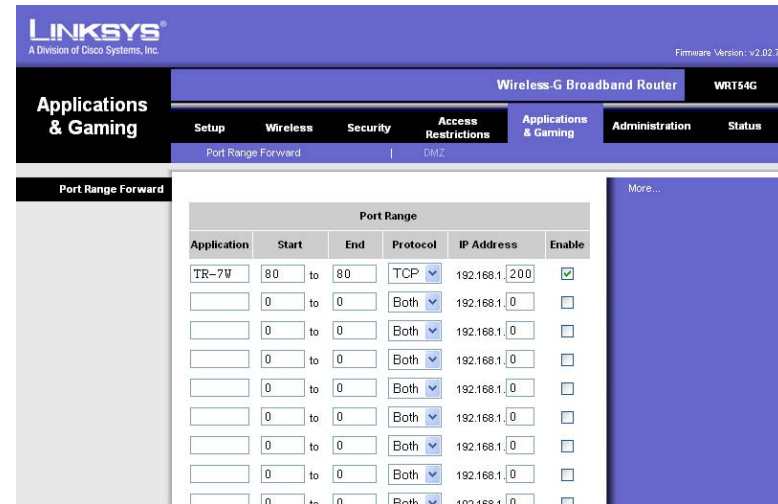
- DDNS Service: DynDNS.org
- User Name: TR-7W Customer
- Password: [Redacted]
- Host Name: rmyuni.dyndns.org
- Internet IP Address: 24.194.56.99
- Status: DDNS is updated successfully

At the bottom of the page, there are two buttons: "Save Settings" and "Cancel Changes". The Cisco Systems logo is visible in the bottom right corner.

#### IV) Set the Router to Allow External Access to the TR-7W

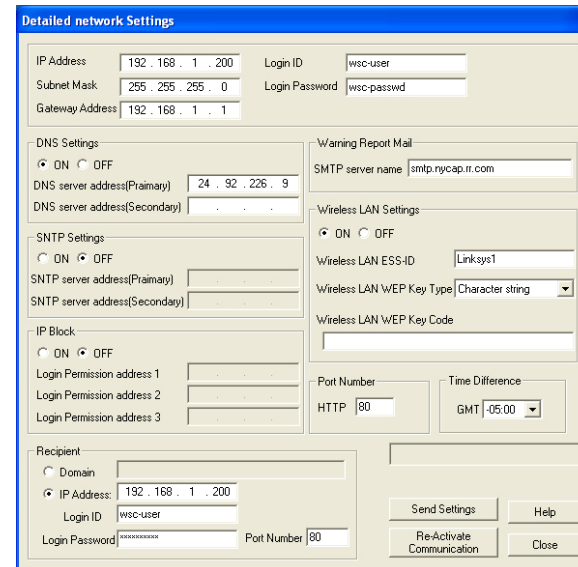
1. With the Router's setup utility software still open, go to the "Port Forwarding" tab.
2. Enter the logical name of the TR-7W.
3. Set "Port 80" as the range (for an http server).
4. Set the protocol as TCP (/IP).
5. Set the IP address of the TR-7W.
6. Check the Enable box.

Port Range Forwarding Window



#### V) Configure the TR-7W for Internet Access

1. Click on the "Detailed Network Settings" tab.
2. Enter the IP address, Login ID and Password for the unit to configured.
3. Click on the "Get Settings" button.
4. Click on the "Change Settings" button.
5. Turn "DNS Settings" On.
6. Enter the IP address of your ISP's DNS server\*.

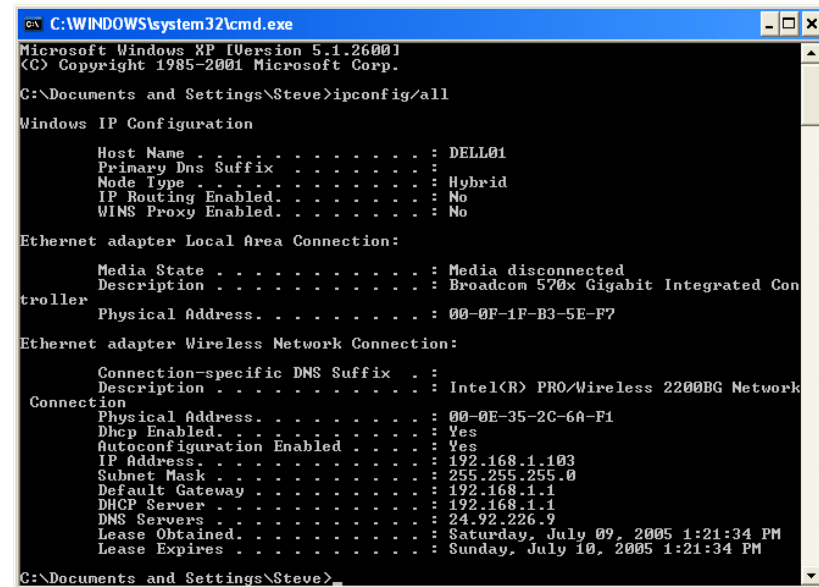


be

## \*Determining Router & Server IP Addresses

Key addresses for your router and ISP server can be obtained from your computer. In order to display this information use the following procedure:

1. Connect your PC to the LAN that the TR-7W will reside on.
2. Go to the Start menu and click on Run.
3. Enter "Cmd".
4. In the DOS prompt window enter "ipconfig/all".
5. In the "Connection" Section find:
  - The IP address of the PC  
(as assigned by the router)
  - The assigned subnet mask
  - The router's default gateway address
  - The IP address of your ISP's DNS server



```
C:\WINDOWS\system32\cmd.exe
Microsoft Windows XP [Version 5.1.2600]
(C) Copyright 1985-2001 Microsoft Corp.

C:\Documents and Settings\Steve>ipconfig/all

Windows IP Configuration

    Host Name . . . . . : DELL01
    Primary Dns Suffix . . . . . :
    Node Type . . . . . : Hybrid
    IP Routing Enabled. . . . . : No
    WINS Proxy Enabled. . . . . : No

Ethernet adapter Local Area Connection:

    Media State . . . . . : Media disconnected
    Description . . . . . : Broadcom 570x Gigabit Integrated Con
controller
    Physical Address. . . . . : 00-0F-1F-B3-5E-F7

Ethernet adapter Wireless Network Connection:

    Connection-specific DNS Suffix . . :
    Description . . . . . : Intel(R) PRO/Wireless 2200BG Network
Connection
    Physical Address. . . . . : 00-0E-35-2C-6A-F1
    Dhcp Enabled. . . . . : Yes
    Autoconfiguration Enabled . . . . : Yes
    IP Address. . . . . : 192.168.1.103
    Subnet Mask . . . . . : 255.255.255.0
    Default Gateway . . . . . : 192.168.1.1
    DHCP Server . . . . . : 192.168.1.1
    DNS Servers . . . . . : 24.92.226.9
    Lease Obtained. . . . . : Saturday, July 09, 2005 1:21:34 PM
    Lease Expires . . . . . : Sunday, July 10, 2005 1:21:34 PM

C:\Documents and Settings\Steve>
```

DOS Prompt Window