

# HiTemp140X2

## High Temperature Dual Probe Data Loggers with Two Remote Temperature Probes



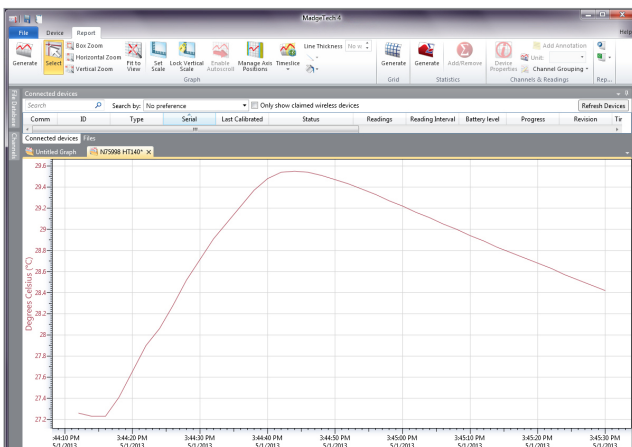
The HiTemp140X2 series of dual probe high temperature data loggers are comprised of a stainless steel data logger body and offers multiple combinations of a 2 inch rigid transitional diameter probe to measure ambient temperature, a flexible probe or a bendable stainless steel probe.

The FP models offer lightweight, flexible RTD probes coated with PFA insulation and come in 6 inch, 12 inch, 36 inch and 72 inch lengths and can be combined with a bendable probe or rigid probe.

The PT models combine a flexible probe or rigid probe with a 24 inch bendable probe made of stainless steel with either a 1 inch or 5 inch probe sheath at the tip. The TD models combine the 2 inch rigid transitional diameter probe with either the flexible probe or bendable probe.

Using the latest MadgeTech Software, starting, stopping and downloading the HiTemp140X2 data is simple and easy. To use, simply place the HiTemp140X2 in the IFC400 or IFC406 docking station (sold separately). Using the software, an immediate or delay start can be chosen, as well as the reading interval. Start the data logger, remove it from the docking station and the device is ready to be deployed. Graphical, tabular and summary data is provided for analysis and data can be viewed in °C, °F, K or °R. The data can also be automatically exported to Excel® for further calculations.

### MadgeTech 4 Software Features



- Multiple graph overlay
- Statistics
- Digital calibration
- Zoom in/ zoom out
- Lethality equations (F0, PU)
- Mean Kinetic Temperature
- Full time zone support
- Data annotation
- Min./Max./Average lines
- Summary view

### FEATURES

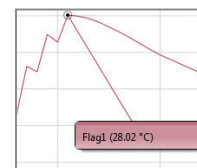
- ±0.1 °C (±0.18 °F) Accuracy (+20 °C to +140 °C)
- Rigid Probe Measurement Range -200 °C to +260 °C (-328 °F to +500 °F)
- Flexible Probe Measurement Range -200 °C to +260 °C (-328 °F to +500 °F)
- Bendable Probe Measurement Range -200 °C to +350 °C (-328 °F to +662 °F)
- Operating Environment -40 °C to +140 °C
- Submersible (IP68)
- User Replaceable Battery
- Trigger Settings
- Programmable Start and Stop Time
- Battery Life Indicator

### BENEFITS

- Simple Setup and Installation
- Minimal Long-Term Maintenance
- Long-Term Field Deployment

### APPLICATIONS

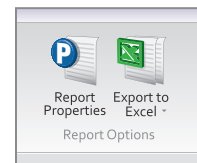
- Autoclave Verification
- Implement HACCP Programs
- Food Preparation and Processing
- Environmental Studies
- Well Monitoring
- Dishwasher Testing
- Pasteurization



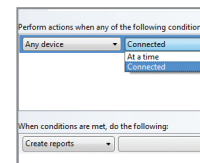
Cooling Flags

Time	Time Zone	Delta
11:37 PM	-0400	-00:00:00
11:43 PM	-0400	-00:00:00
11:53 PM	-0400	-00:00:00
11:57 PM	-0400	-00:00:00
11:57 PM	-0400	-00:00:00
11:57 PM	-0400	-00:00:00
11:57 PM	-0400	-00:00:00
12:03 PM	-0400	-00:00:00
12:17 PM	-0400	-00:00:00
12:23 PM	-0400	-00:00:00
12:37 PM	-0400	-00:00:00
12:47 PM	-0400	-00:00:00
12:57 PM	-0400	-00:00:00
1:06 PM	-0400	-00:00:00
1:27 PM	-0400	-00:00:00
1:28 PM	-0400	-00:00:00

Tabular Data View



Export to Excel



Automation

# Specifications

Specifications are subject to change without notice. Specific warranty remedy limitations apply. Call (603) 456-2011 or go to [madgetech.com](http://madgetech.com) for details.

TEMPERATURE	
<b>Temperature Sensor</b>	<b>HiTemp140X2- FPST:</b> Two Flexible RTD Probes <b>HiTemp140X2- FPST-PT:</b> Flexible RTD Probe and Bendable RTD Probe <b>HiTemp140X2-TD-PT:</b> Rigid RTD Probe with a Bendable RTD Probe <b>HiTemp140X2-TD-FPST:</b> Rigid RTD Probe with a Flexible RTD Probe
<b>Probe Measurement Range</b>	<b>Rigid Probe:</b> -200 °C to +260 °C (-328 °F to +500 °F) <b>Bendable Probe:</b> -200 °C to +350 °C (-328 °F to +662 °F) <b>Flexible Probe:</b> -200 °C to +260 °C (-328 °F to +500 °F) <b>*BODY OF LOGGER CANNOT EXCEED 140 °C</b>
<b>Temperature Resolution</b>	0.01 °C (0.02 °F)
<b>Calibrated Accuracy</b>	±0.1 °C (+20 °C to +140 °C); 0.18 °F (+68 °F to +284 °F) ±0.3 °C (-20 °C to 19.99 °C); 0.54 °F (-4 °F to +67.98 °F) ±0.4 °C (-40 °C to -20.01 °C); 0.72 °F (-40 °F to +68.018 °F)

GENERAL	
<b>Start Modes</b>	Software programmable immediate start Delay start up to 18 months in advance
<b>Stop Modes</b>	Manual or Timed (specific date and time)
<b>Trigger Settings</b>	High and Low limits may be set. Once data meets or exceed sets limits, the device will record to memory. Bi-level start and stop triggers can also be programmed. Users can specify the number of readings to take after the device triggers. ( <i>Triggering on channel #1 only</i> )
<b>Memory</b>	16,128 readings
<b>Readings in Trigger Settings Mode</b>	5,376 readings
<b>Real Time Recording</b>	May be used with PC to monitor and record data in real time
<b>Password Protection</b>	An optional password may be programmed into the device to restrict access to configuration options. Data may be read out without the password
<b>Wrap Around</b>	Yes
<b>Reading Rate</b>	1 reading every second up to 1 reading every 24 hours
<b>Calibration</b>	Digital calibration through software
<b>Calibration Date</b>	Automatically recorded within device
<b>Battery Type</b>	3.6V high-temperature lithium battery included; user replaceable
<b>Battery Life</b>	1 year typical (1 minute reading rate at 25 °C/ 77 °F)

<b>Data Format</b>	Date and time stamped °C, K, °F or °R
<b>Time Accuracy</b>	±1 minute/month at 25 °C (77 °F) Extended Operation: ±20 minutes/month at 140 °C (±450 ppm)
<b>Computer Interface</b>	IFC400 or IFC406 USB docking station required; 125,000 baud
<b>Operating System Compatibility</b>	Windows XP SP3 or later
<b>Software Compatibility</b>	MadgeTech Standard Software version 4.2.1.0 or later MadgeTech Secure Software version 4.2.0.0 or later
<b>Operating Environment</b>	-40 °C to +140 °C (-40 °F to +284 °F) 0 %RH to 100 %RH, 0.002 PSIA to 100 PSIA
<b>IP Rating</b>	IP68
<b>Dimensions (Body)</b>	1.89 in x 0.97 in x 0.97 in (48 mm x 24.6 mm x 24.6 mm)
<b>Dimensions (Probe)</b>	<b>6 inch Flexible Probe:</b> 6 in x 0.13 in (152 mm x 3.2 mm) <b>12 inch Flexible Probe:</b> 12 in x 0.13 in (305 mm x 3.2 mm) <b>36 inch Flexible Probe:</b> 36 in x 0.13 in (914.4 mm x 3.2 mm) <b>72 inch Flexible Probe:</b> 72 in x 0.13 in (1829 mm x 3.2 mm)  <b>1 Inch PT Bendable Probe:</b> <b>Probe tip:</b> 1.7 in x 0.125 in dia. (42 mm x 3.2 mm dia.) <b>Bendable portion:</b> 22 in x 0.062 in dia. (559 mm x 1.6 mm dia.)  <b>5 Inch PT Bendable Probe:</b> <b>Probe tip:</b> 4.8 in x 0.125 in dia. with 1 in x 0.188 in dia. handle (121 mm x 3.2 mm dia. with 25 mm x 4.8 mm dia. handle) <b>Bendable portion:</b> 22 in x 0.062 in dia. (559 mm x 1.6 mm dia.)  <b>TD Rigid Probe:</b> 2.0 in x 0.125 in dia. (0.188 in transitional dia.) 51 mm x 3.2 mm dia. (4.8 mm transitional dia.)
<b>Weight</b>	<b>HiTemp140X2-FPST:</b> 4.1 oz (115 g) <b>HiTemp140X2-FPST-PT:</b> 3.9 oz (110 g) <b>HiTemp140X2-TD-PT:</b> 3.0 oz (85 g) <b>HiTemp140X2-TD-FPST:</b> 3.5 oz (100 g)
<b>Material</b>	<b>Body:</b> 316 Stainless Steel, Radel <b>Bendable Probe:</b> 316 Stainless Steel <b>Flexible Probe:</b> PFA Insulated Cable with Stainless Steel Tip
<b>Approvals</b>	CE

**BATTERY WARNING:** FIRE, EXPLOSION, AND SEVERE BURN HAZARD. DO NOT SHORT CIRCUIT, CHARGE, FORCE OVER DISCHARGE, CRUSH, PENETRATE, OR INCINERATE. BATTERY MAY LEAK OR EXPLODE IF HEATED ABOVE 150 °C (302 °F).

# Ordering Information

<b>HITEMP140X2-FPST-6</b>	PN 902335-00	High Temperature dual probe data logger with two 6 inch flexible probes with stainless steel tips
<b>HITEMP140X2-FPST-12</b>	PN 902331-00	High Temperature dual probe data logger with two 12 inch flexible probes with stainless steel tips
<b>HITEMP140X2-FPST-24</b>	PN 902333-00	High Temperature dual probe data logger with two 24 inch flexible probes with stainless steel tips
<b>HITEMP140X2-FPST-36</b>	PN 902318-00	High Temperature dual probe data logger with two 36 inch flexible probes with stainless steel tips
<b>HITEMP140X2-FPST-72</b>	PN 902321-00	High Temperature dual probe data logger with two 72 inch flexible probes with stainless steel tips
<b>HITEMP140X2-FPST-6-FPST-12</b>	PN 902334-00	High Temperature dual probe data logger with a 6 inch flexible probe and 12 inch flexible probe with stainless steel tips
<b>HITEMP140X2-FPST-6-FPST-36</b>	PN 902328-00	High Temperature dual probe data logger with a 6 inch flexible probe and 36 inch flexible probe with stainless steel tips
<b>HITEMP140X2-FPST-12-PT-1</b>	PN 902332-00	High Temperature dual probe data logger with a 12 inch flexible probe with stainless steel tip and 24 inch bendable probe with a 1 inch piercing tip
<b>HITEMP140X2-FPST-36-PT-1</b>	PN 902319-00	High Temperature dual probe data logger with a 36 inch flexible probe with stainless steel tip and 24 inch bendable probe with a 1 inch piercing tip
<b>HITEMP140X2-FPST-72-PT-1</b>	PN 902322-00	High Temperature dual probe data logger with a 72 inch flexible probe with stainless steel tip and 24 inch bendable probe with a 1 inch piercing tip
<b>HITEMP140X2-FPST-36-PT-5</b>	PN 902320-00	High Temperature dual probe data logger with a 36 inch flexible probe with stainless steel tip and 24 inch bendable probe with a 5 inch piercing tip
<b>HITEMP140X2-FPST-72-PT-5</b>	PN 902323-00	High Temperature dual probe data logger with a 72 inch flexible probe with stainless steel tip and 24 inch bendable probe with a 5 inch piercing tip
<b>HITEMP140X2-TD-FPST-6</b>	PN 902338-00	High Temperature dual probe data logger with 2 inch transitional diameter probe and 6 inch flexible probe with stainless steel tip
<b>HITEMP140X2-TD-FPST-12</b>	PN 902329-00	High Temperature dual probe data logger with 2 inch transitional diameter probe and 12 inch flexible probe with stainless steel tip
<b>HITEMP140X2-TD-FPST-36</b>	PN 902324-00	High Temperature dual probe data logger with 2 inch transitional diameter probe and 36 inch flexible probe with stainless steel tip
<b>HITEMP140X2-TD-FPST-72</b>	PN 902325-00	High Temperature dual probe data logger with 2 inch transitional diameter probe and 72 inch flexible probe with stainless steel tip
<b>HITEMP140X2-TD-PT-1</b>	PN 900281-00	High Temperature dual probe data logger with 2 inch transitional diameter probe and 24 inch bendable probe with a 1 inch piercing tip
<b>HITEMP140X2-TD-PT-5</b>	PN 900283-00	High Temperature dual probe data logger with 2 inch transitional diameter probe and 24 inch bendable probe with a 5 inch piercing tip
<b>IFC400</b>	PN 900319-00	Docking station with USB cable
<b>IFC406</b>	PN 900325-00	6 Port, Multiplexer docking station with USB cable
<b>ER14250-SM</b> <i>Formerly ER14250MR-145</i>	PN 900097-00	Replacement battery for the HiTemp140X2



 <p><b>WessexPower</b> Solutions for High-tech Instrumentation <a href="http://www.wessexpower.co.uk">www.wessexpower.co.uk</a></p>	 <p><b>LSTechnology</b> E-commerce Instrumentation <a href="http://www.loggershop.co.uk">www.loggershop.co.uk</a></p>
Telephone +44(0)1929 459 459	Email <a href="mailto:sales@WPLS.co.uk">sales@WPLS.co.uk</a>