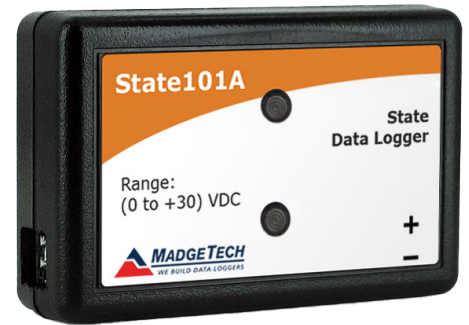


# State101A

## State Data Logger



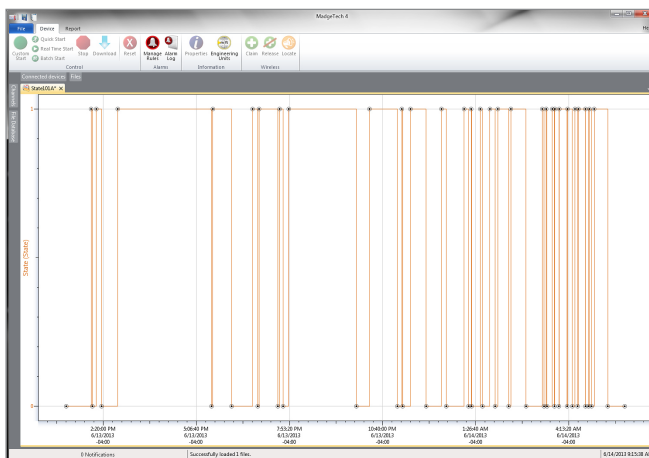
The State101A data logger monitors and records the occurrence, duration and status of predetermined events by measuring changes in voltage. Typically connected to a relay or switch, this data logger features a removable screw terminal block to easily disconnect and retrieve the logger for data download without disrupting wiring connectivity.

The State101A is a great solution for a variety of industries and applications including HVAC studies to monitor heating and cooling systems for efficiency or the monitoring of gas, water or electric pumps. This device replaces costly strip chart recorders and is also used in TTL high/low monitoring, general status recording and security systems as well.

With a user programmable reading rate of up to 4Hz, 10 year battery life and the ability to store over 400,000 readings, the State101A is extremely versatile and can be active in the field for long durations of time. Other features include optional password protection and pushbutton start/stop directly on the device.

The MadgeTech Data Logger Software provides the user with many customizable options for device configuration and makes data analysis easy with graph displays, tabular data and endless reporting tools.

## MadgeTech 4 Software Features



Graph View

- Multiple graph overlay
- Statistics
- Digital calibration
- Zoom in/ zoom out
- Lethality equations (F0, PU)
- Mean Kinetic Temperature
- Full time zone support
- Data annotation
- Min./Max./Average lines
- Summary view

## FEATURES

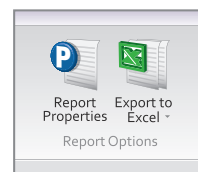
- 10 Year Battery Life
- 4 Hz Second Reading Rate
- Multiple Start/Stop Function
- Ultra High Speed Download
- 465,578 Reading Storage Capacity
- Memory Wrap
- Battery Life Indicator
- Optional Password Protection
- Field Upgradeable

## BENEFITS

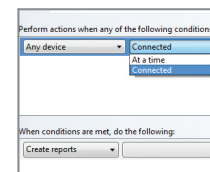
- Simple Setup and Installation
- Minimal Long-Term Maintenance
- Long-Term Field Deployment

## APPLICATIONS

- Heating and Cooling Systems
- Security Systems
- Power Supply On/Off
- Relay or Dry Contact Closure
- TTL High/Low
- Monitoring Gas, Water or Electric Pumps
- Status or State Recording
- Replace Costly Strip Chart Recorders



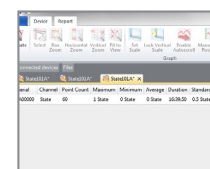
Export to Excel



Automation

Time	Time Zone	Delta
3 1:13:37 PM	-04:00	-00:00:00
3 1:24:37 PM	-04:00	+00:01:00
3 1:35:37 PM	-04:00	+00:02:00
3 1:46:37 PM	-04:00	+00:03:00
3 1:57:37 PM	-04:00	+00:04:00
3 2:08:37 PM	-04:00	+00:05:00
3 2:19:37 PM	-04:00	+00:06:00
3 2:30:37 PM	-04:00	+00:07:00
3 2:41:37 PM	-04:00	+00:08:00
3 2:52:37 PM	-04:00	+00:09:00
3 3:03:37 PM	-04:00	+00:10:00
3 3:14:37 PM	-04:00	+00:11:00
3 3:25:37 PM	-04:00	+00:12:00
3 3:36:37 PM	-04:00	+00:13:00
3 3:47:37 PM	-04:00	+00:14:00
3 3:58:37 PM	-04:00	+00:15:00

Tabular Data View



Statistics

# Specifications

Specifications are subject to change without notice. Specific warranty remedy limitations apply. Call (603) 456-2011 or go to [madgetech.com](http://madgetech.com) for details.

GENERAL	
<b>Start Modes</b>	Immediate start Delay start up to 18 months Multiple pushbutton start/stop
<b>Stop Modes</b>	Manual through software Timed (specific date and time)
<b>Multiple Start/Stop Mode</b>	Start and stop the device multiple times without having to download data or communicate with a PC
<b>Real Time Recording</b>	May be used with PC to monitor and record data in real time
<b>Password Protection</b>	An optional password may be programmed into the device to restrict access to configuration options. Data may be read out without the password
<b>Memory</b>	465,578 readings; software configurable memory wrap
<b>Wrap Around</b>	Yes
<b>Reading Rate</b>	4 Hz up to 1 reading every 24 hours
<b>Engineering Units</b>	Native measurement units can be scaled to display measurement units of another type such as on/off, open/closed and more
<b>LED Functionality</b>	<b>Green LED Blinks:</b> 10 seconds to indicate logging and 15 seconds to indicate Delay or Manual Start Mode - Standby (waiting to start) <b>Red LED Blinks:</b> 10 seconds to indicate low battery and/or full memory
<b>LEDs</b>	2 status LEDs
<b>Calibration</b>	Digital calibration through software
<b>Calibration Date</b>	Automatically recorded within device
<b>Battery Type</b>	3.6 V lithium battery included; user replaceable
<b>Battery Life</b>	10 years typical, dependent upon frequency and duty cycle
<b>Time Accuracy</b>	±1 minute/month at 25 °C (77 °F) (Stand alone mode)

<b>Computer Interface</b>	USB (interface cable required); 115,200 baud
<b>Operating System Compatibility</b>	Windows XP SP3 or later
<b>Software Compatibility</b>	Standard Software version 4.1.6.0 or later Secure Software version 4.1.6.0 or later
<b>Operating Environment</b>	-40 °C to +80 °C (-40 °F to +176 °F) 0 %RH to 95 %RH non-condensing
<b>Dimensions</b>	1.4 in x 2.1 in x 0.6 in (35 mm x 54 mm x 15 mm)
<b>Weight</b>	0.8 oz (24 g)
<b>Material</b>	Polycarbonate
<b>Approvals</b>	CE

MEASUREMENT	
<b>Input Connection</b>	Removable screw terminal
<b>Input Range</b>	0 V to 30 V
<b>Input Low</b>	< 0.4 V
<b>Input High</b>	> 2.8 V
<b>Internal Weak Pull-Up</b>	< 60 µA
<b>Input Impedance</b>	> 60 kΩ

**BATTERY WARNING:** Fire, explosion and severe burn hazard. Do not recharge, disassemble, heat above 100 °C (212 °F), incinerate, crush, or expose contents to water.



 <p>Solutions for High-tech Instrumentation</p> <p><a href="http://www.wessexpower.co.uk">www.wessexpower.co.uk</a></p>	 <p>E-commerce Instrumentation</p> <p><a href="http://www.loggershop.co.uk">www.loggershop.co.uk</a></p>
Telephone +44(0)1929 459 459	Email <a href="mailto:sales@WPLS.co.uk">sales@WPLS.co.uk</a>

## Ordering Information

<b>State101A</b>	PN 901571-00	State Data Logger
<b>IFC200</b>	PN 900298-00	USB interface cable
<b>LTC-7PN</b>	PN 900352-00	Replacement battery for the State101A

For Quantity Discounts call (603) 456-2011 or email [sales@madgetech.com](mailto:sales@madgetech.com).