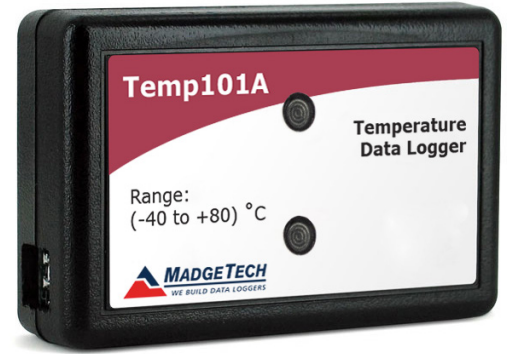


Temp101A

Temperature Data Logger

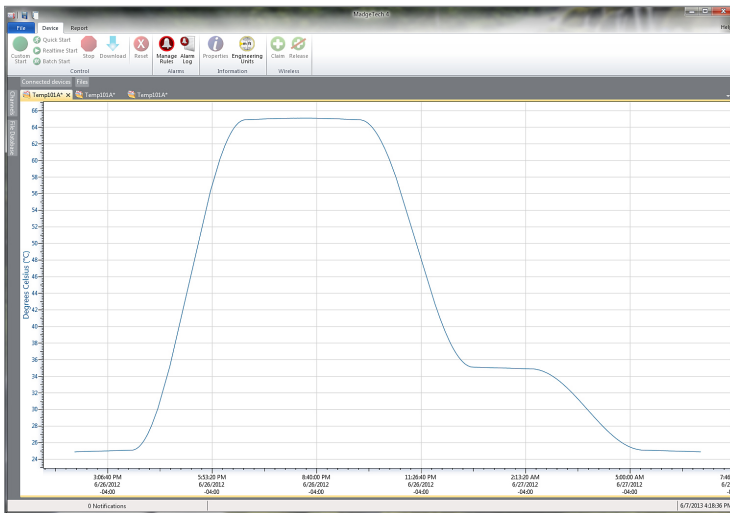


The Temp101A is second to none in the compact, portable and low cost data logger class. This device can measure and record ambient temperature from -40 °C to 80 °C (-40 °F to +176 °F) and is approximately the size of a matchbox which allows for easy placement even in tight spaces.

The Temp101A features a pushbutton start/stop on the device or can be configured to start and stop using the MadgeTech Data Logger Software, with the ability to schedule a delayed start up to eighteen months in advance. These features combined with the ability to store over 2,000,000 readings makes the Temp101A the ideal solution for long term temperature deployment and monitoring cycles.

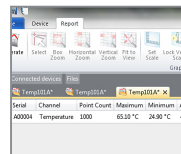
Some common applications for the Temp101A include but are not limited to cold chain and shipping applications, warehouse and facility mapping, HVAC or refrigerator and freezer monitoring.

MadgeTech 4 Software Features

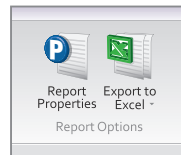


Graph View

- Multiple graph overlay
- Statistics
- Digital calibration
- Zoom in/ zoom out
- Lethality equations (F0, PU)
- Mean Kinetic Temperature
- Full time zone support
- Data annotation
- Min./Max./Average lines
- Summary view



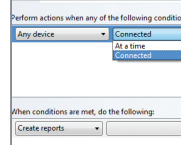
Statistics



Export to Excel

| Time | Time Zone | Data |
|------------|-----------|-----------|
| 1:13:37 PM | -0400 | -05:00:00 |
| 1:14:37 PM | -0400 | -05:01:00 |
| 1:15:37 PM | -0400 | -05:02:00 |
| 1:16:37 PM | -0400 | -05:03:00 |
| 1:17:37 PM | -0400 | -05:04:00 |
| 1:18:37 PM | -0400 | -05:05:00 |
| 1:19:37 PM | -0400 | -05:06:00 |
| 1:20:37 PM | -0400 | -05:07:00 |
| 1:21:37 PM | -0400 | -05:08:00 |
| 1:22:37 PM | -0400 | -05:09:00 |
| 1:23:37 PM | -0400 | -05:10:00 |
| 1:24:37 PM | -0400 | -05:11:00 |
| 1:25:37 PM | -0400 | -05:12:00 |
| 1:26:37 PM | -0400 | -05:13:00 |
| 1:27:37 PM | -0400 | -05:14:00 |
| 1:28:37 PM | -0400 | -05:15:00 |

Tabular Data View



Automation

Features

- 10 Year Battery Life
- ±0.5 °C (±0.9 °F) Accuracy
- Multiple Start/Stop Function
- Ultra High Speed Download
- 2,095,104 Reading Storage Capacity
- Memory Wrap
- Precision RTD Sensing Element
- Battery Life Indicator
- Optional Password Protection
- Programmable High and Low Alarms
- Field Upgradeable

Benefits

- Simple Setup and Installation
- Minimal Long-Term Maintenance
- Long-Term Field Deployment

Applications

- Cold Chain
- Refrigerator and Freezer Monitoring
- Vaccine Monitoring
- Warehouse Mapping
- HVAC
- General Purpose Temperature Recording

SPECIFICATIONS

Specifications are subject to change without notice. Specific warranty remedy limitations apply.

| TEMPERATURE | |
|------------------------|---|
| Temperature Sensor | Precision RTD Element |
| Temperature Range | -40 °C to +80 °C (-40 °F to +176 °F) |
| Temperature Resolution | 0.01 °C (0.02 °F) |
| Calibrated Accuracy | ±0.5 °C (±0.9 °F) from -5 °C to +55 °C (+23 °F to +131 °F) ±1.0 °C (±1.8 °F) from -40 °C to -5.01 °C (-40 °F to +22.9 °F) and +55.01 °C to +80 °C (+131.01 °F to +176 °F) |

| GENERAL | |
|--------------------------------|--|
| Start Modes | Immediate start Delay start up to 18 months Multiple pushbutton start/stop |
| Stop Modes | Manual through software Timed (specific date and time) |
| Multiple Start/Stop Mode | Start and stop the device multiple times without having to download data or communicate with a PC |
| Real Time Recording | May be used with PC to monitor and record data in real time |
| Password Protection | An optional password may be programmed into the device to restrict access to configuration options. Data may be read out without the password. |
| Memory | 2,095,104 readings; software configurable memory wrap 419,020 readings in multiple start/stop mode |
| Wrap Around | Yes |
| Reading Rate | 1 reading every second up to 1 reading every 24 hours |
| Alarm | Programmable high and low limits; alarm is activated when temperature reaches or exceeds set limits |
| LEDs | 2 status LEDs |
| Calibration | Digital calibration through software |
| Calibration Date | Automatically recorded within device |
| Battery Type | 3.6V lithium battery included; user replaceable |
| Battery Life | 10 years typical at a 15 minute reading rate |
| Data Format | Date and time stamped °C, K, °F or °R |
| Time Accuracy | ±1 minute/month at 25 °C (77 °F) (Stand alone mode) |
| Computer Interface | USB (interface cable required); 115,200 baud |
| Operating System Compatibility | Windows XP SP3 or later |
| Software Compatibility | Standard Software version 2.03.06 or later Secure Software version 4.1.3.0 or later |
| Operating Environment | -40 °C to +80 °C (-40 °F to +176 °F) 0 %RH to 95 %RH non-condensing |
| Dimensions | 1.4 in x 2.1 in x 0.6 in (35 mm x 54 mm x 15 mm) |
| Weight | 0.8 oz (24 g) |
| Material | Polycarbonate |
| Approvals | CE |

BATTERY WARNING: FIRE, EXPLOSION AND SEVERE BURN HAZARD. DO NOT RECHARGE, DISASSEMBLE, HEAT ABOVE 100 °C (212 °F), INCINERATE, CRUSH, OR EXPOSE CONTENTS TO WATER.

Ordering Information

| | | |
|----------|--------------|--------------------------------------|
| Temp101A | PN 901678-00 | Temperature Data Logger |
| IFC200 | PN 900298-00 | USB interface cable |
| LTC-7PN | PN 900352-00 | Replacement battery for the Temp101A |

DOC-1214009-00 REV 11 2022.11.28