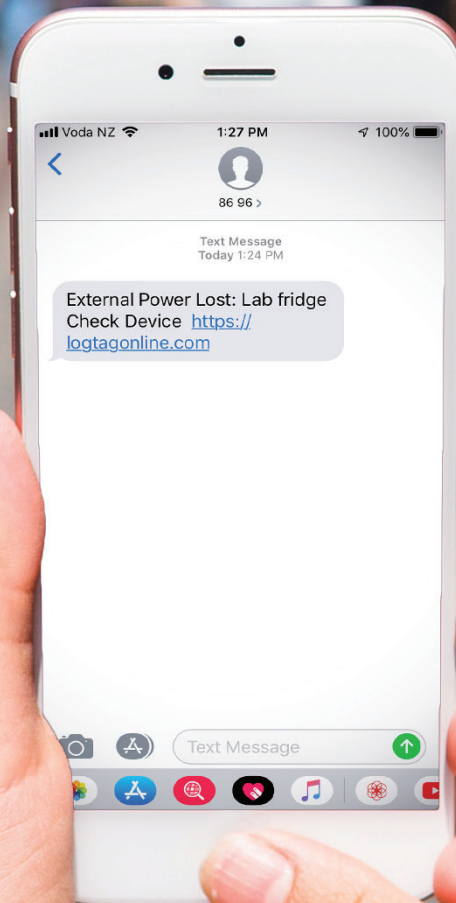


YOUR DATA, ANYWHERE, ANYTIME

External Power Lost: Lab fridge
Check Device [https://
logtagonline.com](https://logtagonline.com)



UTRED30-WiFi
30 Day WiFi Logger with Display

LogTag Recorders

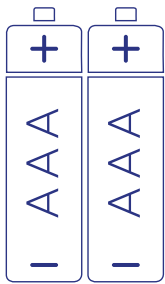


The LogTag® UTRED30-WiFi temperature data logger automatically uploads real-time temperature data to your LogTag® Online cloud account via your existing wireless network.

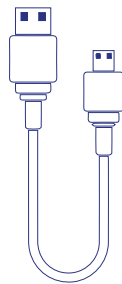
It features a large, easy-to-read display, along with many familiar attributes known from the LogTag® family of data loggers.

These include non-volatile memory for up to 16,129 temperature readings and a statistical memory, storing maximum and minimum reading as well as alarm duration for each of the last 30 days.

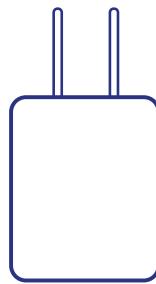
Accessories



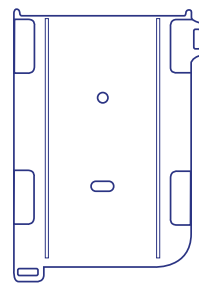
2x AAA Batteries
Not Included



USB Cable
Included



AC Adapter
Not Included



Wall Mount
Not Included



Glycol Buffer
Not Included



External Probe
Not Included. (Required)

Sensors are available with a 1.5m or 3m cable.
E.g. ST100J-15 for 1.5m or ST100J-30 for 3m cable.

Compatible probes below:

ST100J	40mm tip length, ø3.2mm.
ST100K	65mm tip length, ø3.2mm.
ST100L	90mm tip length, ø3.2mm.
ST100S	30mm tip length, ø5mm.
ST100T	140mm tip length, ø5mm.
ST100H	Handled with 105mm tip length, ø5mm.
ST100B	Untipped (bare sensor).
STX50	5 Meter extension cable for ST10/ST100 sensors.

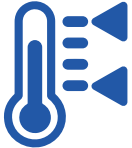
Features



Real-time data automatically uploaded via WiFi to the LogTag Online cloud.



Download data via LogTag Analyzer or as a PDF (no software required) when WiFi is unavailable.



Read current temperature and latest Min-Max temperature at a glance.



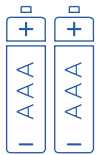
Check and reset Min-Max temperature reading at any time.



Audible alarm and flashing red LED signals a temperature alarm.



View alarm status for up to 30 days at a glance.



Can be powered by 2x AAA batteries (user replaceable) if not external powered.



Measure and store up to 16,000 readings – enough for 67 days at 6 minute logging.



Auto-pause function suspends alarm & statistic processing when the external sensor is unplugged.



Second battery backup via a coin cell to ensure no data is lost.

Applications



Pharmaceutical



Medical & Healthcare



Cold Storage & Warehousing

Specifications

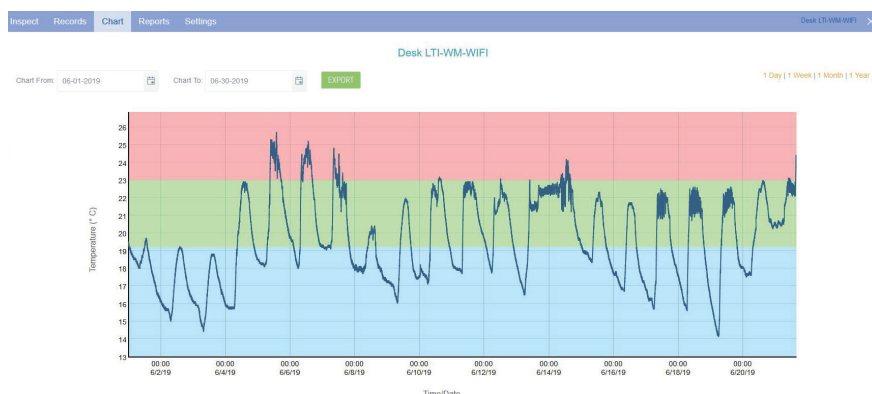
Product Model	UTRED30-WiFi.
Sensor Measurement Range	-40°C to +99°C (-40°F to +210°F).
Operating Temperature Range	-30°C to +60°C (-22°F to +140°F).
Storage Temperature Range	-10 °C to +40 °C (32 °F to +104 °F).
Rated Temperature Reading Resolution	0.1°C or 0.1°F.
Rated Temperature Reading Accuracy	Better than ±0.5°C (±0.9°F) for -20°C to +40°C (-4°F to +104°F), typically ±0.3°C (0.6°F). Better than ±0.8°C (±1.4°F) for -40°C to -20°C (-40°F to -4°F), typically ±0.5°C (0.9°F). Better than ±0.8°C (±1.4°F) for +40°C to +70°C (+104°F to +158°F), typically ±0.7°C (1.3°F). Better than ±1.2°C (±2.2°F) for +70°C to +99°C (+158°F to +210°F), typically ±1°C (1.8°F).
Recording Capacity	16,129 temperature readings. 67 days at 6 minute logging. Day summary statistics memory (for display on LCD): up to 30 days of Min/Max/duration and alarm trigger statistics.
Sampling Interval	Configurable from 30 seconds to 18 hours.
Logging Start Options	Push button start (with configurable start delay from 1 minute to 72 hours) or specific date & time.
Download Time	Typically with full memory (16,129 readings) in less than 10 seconds.
Environmental	IP51 (when vertically mounted or hung with USB dust-cap in place).
Calibration	Factory calibrated using NIST equivalent reference equipment. Calibration certificate available on request.
Power Source	5V via micro USB socket or, 2 x 1.5V AAA batteries. CR2032 LiMnO ₂ coin cell (backup logging function only).
Battery Life	Device should normally be powered via USB. AAA batteries provide backup power for up to 2 months.
Connection Interface	USB 2.0 / Micro-USB plug.
WiFi	IEEE 802.11 / WPA/WPA2 security.
Size	141mm(H) x 72mm(W) x 18mm(T).
Weight	80g (excluding probe and AAA batteries).
Case Material	Polycarbonate.



Connection Software

Real-time data automatically uploaded via WiFi to the LogTag Online cloud.

For more information on LogTag Online, please visit our website:



WessexPower

Solutions for High-tech Instrumentation

www.wessexpower.co.uk



LSTechnology®

E-commerce Instrumentation

www.loggershop.co.uk

Telephone +44(0)1929 459 459 | Email sales@WPLS.co.uk