

LCS140

Lethality Compliance System

The LCS140 is a data logger with a full Wet-Bulb/Dry-Bulb system, allowing users to record humidity in high temperature applications where a normal humidity sensor isn't viable. The LCS140 ditches the complexity of calculating with a psychrometer, in favor of the easy to use MadgeTech 4 software.

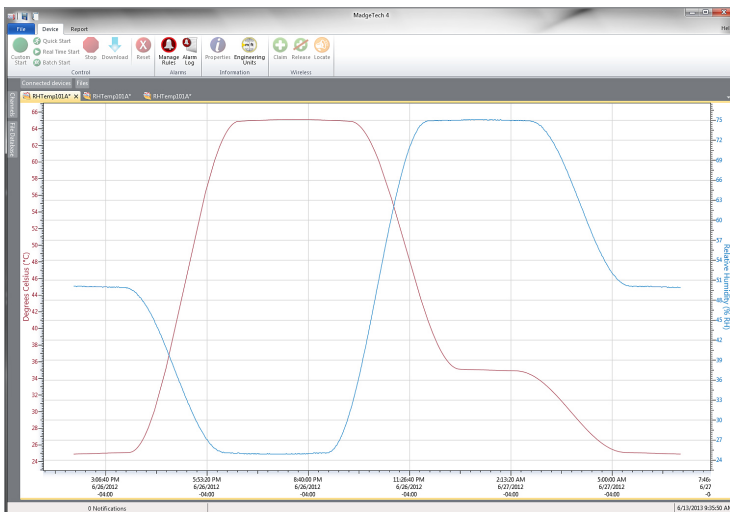
Capable of withstanding temperatures from -40 °C to +140 °C (-40 °F to +284 °F), the dual probe LCS140 takes wet-bulb and dry-bulb readings simultaneously to determine the amount of humidity present.

The LCS140 Includes:

- LCS140 Dual Probe Data Logger
- Reservoir Bottle (recommended to use distilled water only)
- Wet Bulb Socks
- Hanging Fixture

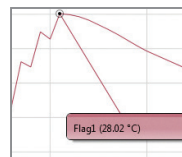
The LCS140 is compatible with the latest MadgeTech 4 Software making starting, stopping, and downloading simple and easy. Graphical, tabular, and summary data is provided for analysis and can be viewed as a math channel.

MadgeTech 4 Software Features

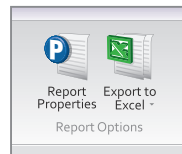


Graph View

- Multiple graph overlay
- Statistics
- Digital calibration
- Zoom in/ zoom out
- Lethality equations (F0, PU)
- Mean Kinetic Temperature
- Full time zone support
- Data annotation
- Min./Max./Average lines
- Summary view



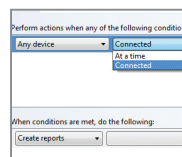
Cooling Flags



Export to Excel

Time	Time Zone	Delta
1:13:37 PM	0400	-00:00:00
1:13:37 PM	0400	-00:01:00
1:13:37 PM	0400	-00:02:00
1:13:37 PM	0400	-00:03:00
1:13:37 PM	0400	-00:04:00
1:13:37 PM	0400	-00:05:00
1:13:37 PM	0400	-00:06:00
1:13:37 PM	0400	-00:07:00
1:13:37 PM	0400	-00:08:00
1:13:37 PM	0400	-00:09:00
1:13:37 PM	0400	-00:10:00
1:13:37 PM	0400	-00:11:00
1:13:37 PM	0400	-00:12:00

Tabular Data View



Automation



Note: Only distilled water is recommended for use in the reservoir bottle.

Features

- 1 Second Reading Rate
- Programmable Start and Stop Time
- 32,767 Readings
- Memory Wrap
- User Replaceable Battery
- Battery Life Indicator
- Trigger Settings
- Optional Password Protection

SPECIFICATIONS

Specifications are subject to change without notice. Specific warranty remedy limitations apply. Call (603) 456-2011 or go to madgetech.com for details.

TEMPERATURE	
Temperature Sensor	Rigid RTD Probe
Temperature Range	-40 °C to +140 °C (-40 °F to +284 °F)
Resolution	0.01 °C (0.02 °F)
Calibrated Accuracy	±0.1 °C (±0.18 °F)

GENERAL	
Start Modes	Software programmable immediate start or delay start up to 18 months in advance
Stop Modes	Manual or Timed (<i>specific date and time</i>)
Memory	32,767 readings
Password Protection	An optional password may be programmed into the device to restrict access to configuration options. Data may be read out with the password.
Readings in Trigger Settings Mode	16,383 readings
Trigger Settings	High and Low limits may be set. Once data meets or exceed sets limits, the device will record to memory. Bi-level start and stop triggers can also be programmed. Users can specify the number of readings to take after the device triggers. (<i>Triggering on channel #1 only</i>)
Wrap Around	Yes
Calibration	Digital calibration through software
Calibration Date	Automatically recorded within device

Battery Type	3.6V high-temperature lithium battery included; user replaceable
Battery Life	1 year typical (1 minute reading rate at 25 °C/77 °F)
Data Format	Date and time stamped °C, °F, °R, K
IP Rating LCS140 Data Logger	IP68
Time Accuracy	1 minute/month at 25 °C (77 °F) Extended Operation: ±20 minutes/month at 140 °C (±450 ppm)
Computer Interface	IFC400 or IFC406 USB docking station required; 125,000 baud
Operating System Compatibility	Windows XP SP3 or later
Software Compatibility	Standard Software version 4.2.19.0 or later Secure Software version 4.2.18.0 or later
Operating Environment	-40 °C to +140 °C (-40 °F to +284 °F) 0 %RH to 100 %RH, 0.002 PSIA to 100 PSIA
Dimensions	13.25 in x 1.75 in x 1.2 in (337 mm x 44 mm x 30 mm)
Weight	6.3 oz (178 g)
Material	316 Stainless Steel / Radel®
Approvals	CE

BATTERY WARNING: FIRE, EXPLOSION, AND SEVERE BURN HAZARD. DO NOT SHORT CIRCUIT, CHARGE, FORCE OVER DISCHARGE, CRUSH, PENETRATE, OR INCINERATE. BATTERY MAY LEAK OR EXPLODE IF HEATED ABOVE 150°C (302°F).

Ordering Information

LCS140	PN 902168-00	Lethality Compliance System
IFC400	PN 900319-00	Docking station with USB cable
IFC406	PN 900325-00	6 Port, Multiplexer docking station with USB cable
LCS140 Data Logger	PN 902229-00	LCS140 Data Logger only
LCS140 Hanging Fixture	PN 902230-00	LCS140 Hanging Fixture only
LCS140 Bottle	PN 902231-00	LCS140 Brushed Aluminum Bottle 4 oz
LCS140 Large Bottle	PN 902308-00	LCS140 Brushed Aluminum Bottle 8 oz
LCS140 Extra Socks	PN 902232-00	LCS140 Extra Socks (6 Pack)
ER14250MR-145	PN 900097-00	Replacement battery for LCS140 Dual Probe Data Logger