



WP WP•LS

 WessexPower Solutions for High-tech Instrumentation www.wessexpower.co.uk	 LSTechnology E-commerce Instrumentation www.loggershop.co.uk
-----------------------------------------------------------------------------------------------------------------------------------------------------------------------------------------------------------------------	-----------------------------------------------------------------------------------------------------------------------------------------------------------------------------------------------------------

Telephone +44(0)1929 459 459 Email sales@WPLS.co.uk

LogTag[®] HAXO-16U

Quick Start Guide

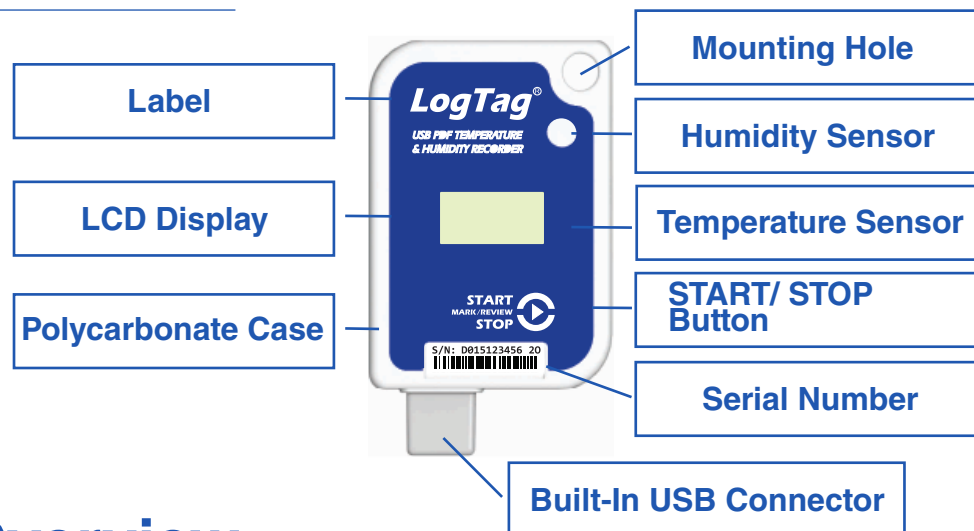
Version B - November 2025

www.logtag.com

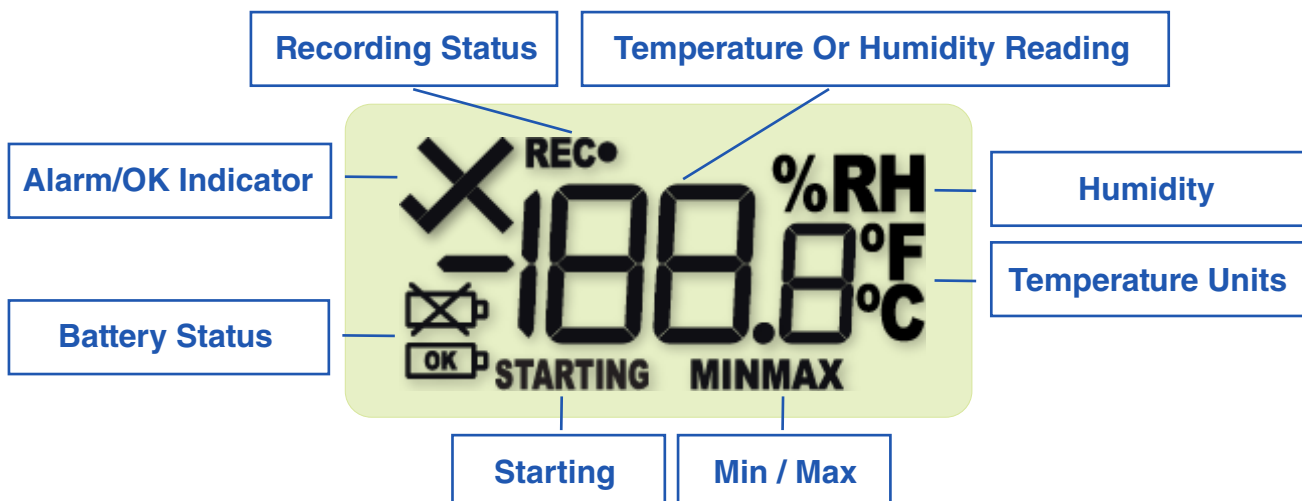
Quick Start Guide Contents

Logger and Display Overview	2
Downloading LogTag [®] Analyzer	3
Configuring your HAXO-16U	3
Starting the HAXO-16U	4
During Recording	4
Stopping the Logger	4
Downloading the Data	5

Logger Overview:



Display Overview:



Downloading LogTag® Analyzer:

To use the HAXO-16U, you will need the latest version of LogTag® Analyzer. To download, open your browser and navigate to:

<https://logtagrecorders.com/software/LTA3/>

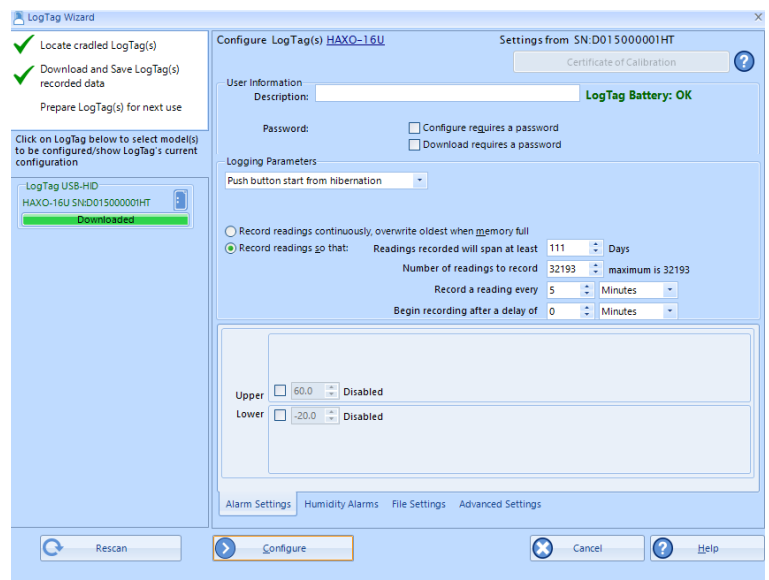
1. Click 'Download' to start the download
2. Click 'Run' or 'Save File' then double-click the downloaded file to open the LogTag® Analyzer Setup Wizard
3. Follow the on-screen prompts to install LogTag® Analyzer
4. Click 'Finish' to exit the LogTag® Analyzer Setup Wizard

Warning: Please ensure no other LogTag® software is currently running on your computer before running LogTag® Analyzer.

Configuring your HAXO-16U:

The HAXO-16U must be configured before you can start recording.

1. Connect your HAXO-16U to the computer via the built-in USB.
2. Open LogTag® Analyzer and select the configuration Wizard.
3. Adjust your logger configuration settings as required.
4. Click 'Configure' to upload the configuration to the logger.
5. Click 'Close' to exit.



Note: For more information on configuration settings, please refer to Configuring HAXO-16U in the [Product User Guide](#) or press 'F1' while LogTag® Analyzer is open for help from your keyboard.

Starting the Logger:

When you unplug the logger, the display shows "rdy." This indicates successful configuration and your logger is ready to start.



Starting the logger:

To start the logger, press and hold the start button. Release when the "rdy" screen disappears.

Note: The logger will not start if you release the button before "RDY" disappears.

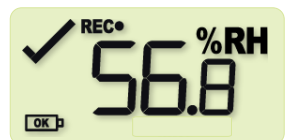
The "REC" symbol confirms that your HAXO-16U is now recording temperature and humidity data.



During Recording:

Cycle Between Temperature and Humidity Display:

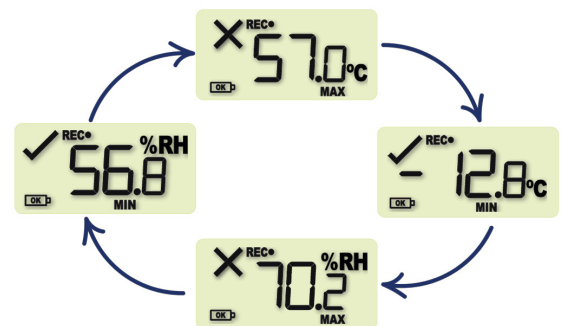
A single press of the [START/STOP](#) button will toggle the display between the most recent Temperature and Humidity readings.



Reviewing Minimum and Maximum Values:

At any time you can review the recorded minimum and maximum temperature and humidity readings by double clicking the [START/STOP](#) button. You can do this while the logger is still taking readings or when it has already stopped, but not when it is plugged into a USB port.

After each subsequent press of the [START/STOP](#) button, the next review screen in the cycle is shown

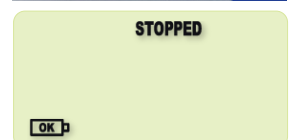


Stopping the Logger:

To stop the logger, simply press and hold the [START/STOP](#) button for 3 seconds. Release when the "REC" icon disappears.

The temperature or humidity display will disappear, and "Stopped" will display at the top of the screen.

Your logger is now ready to have the results downloaded.





Downloading Results:

Software-less Download:

Insert the HAXO-16U into your computer via the built-in USB connector. The computer will detect the logger, and it will appear as a USB drive in your file manager.

Name

 LogTag_D015000001HO_1_250325_1350

 LogTag_D015000001HO_1_250325_1350

Simply select your logger, and a file manager window will open with the logger's PDF report and LogTag® Analyzer file for further analysis.

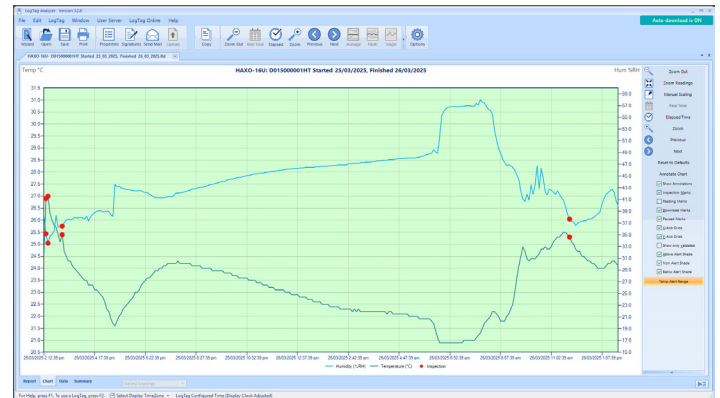
Note: If you have LogTag® Analyzer open on your PC, please close it before you plug in your logger; otherwise, your data will populate in LogTag® Analyzer instead.

LogTag® Analyzer:

With LogTag® Analyzer open, insert the HAXO-16U into your computer via the built-in USB connector.

LogTag® Analyzer will search for your logger and display a chart summary of the logger's data.

Data can be displayed in Report, Chart, Table or Summary formats by clicking the tabs at the bottom of the window.



To download the data from LogTag® Analyzer, click 'Download' from the 'LogTag' menu, or press F4.

Data can be saved in a number of formats including TXT, PDF, HTML and CSV.

Note: By default, auto-download is enabled in LogTag® Analyzer, so when you open the program, data results will be displayed after connecting your HAXO-16U to the computer.

For more information, please refer to the [HAXO-16U product user guide](#).