

CALIBRATABLE REPLACEABLE SMART PROBE



Ultra-Low Temperature
LogTag[®] Smart Probe
CP10S/CP11S



The ultimate solution for uninterrupted temperature monitoring, the LogTag® CP10S and CP11S Smart Probes are precise and reliable probes that can be swapped out and calibrated separately from your logger.

When recalibration is needed, the plug-and-play hot-swappable design allows users to replace the probe easily. Simply disconnect the Smart Probe from your compatible logger, and plug in your new one. Calibration complete.

The expired probe can be sent to a calibration lab for re-calibration.

Features



Plug-and-play hot-swappable calibratable probe without the need to remove the loggers from current location



Easy to download calibration certificate through LogTag® Analyzer



Battery life of 3-years



High quality gold plated MCX connector

Compatibility Chart

Logger Model	1.5m Smart Probe	3m Smart Probe
UTREL30-16 Dual-Channel	CP10S-15	CP10S-30
UTREL30-WiFi Dual-Channel	CP10S-15	CP10S-30
TREL30-16CP	CP11S-15	CP11S-30

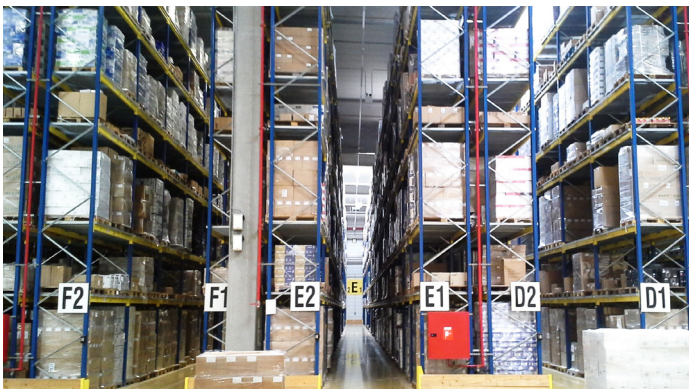
Applications



Laboratories



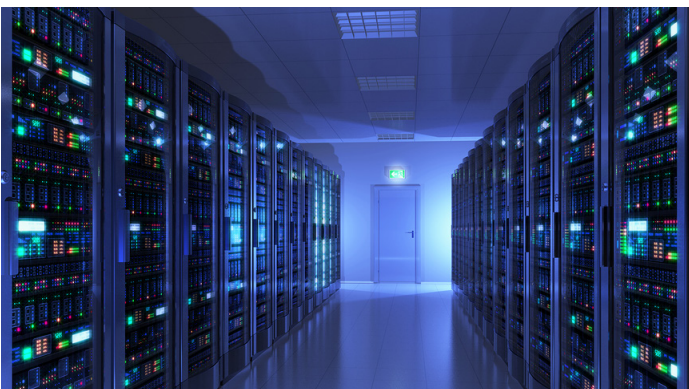
Pharmaceutical and Vaccine



Warehouse



Cold Room



Server Room



Clinics

Specifications

Product Model	CP10S/CP11S
Temperature Measurement Range	-90 °C to +40 °C (-130 °F to +104 °F)
Temperature Operating Range, Probe End	-90 °C to +40 °C (-130 °F to +104 °F)
Temperature Operating Range, Signal Conditioning End	-30 °C to +60 °C (-22 °F to +140 °F)
Rated Temperature Reading Accuracy	Better than ± 0.5 °C (± 0.9 °F) for -20 °C to +10 °C (-4 °F to +50 °F) Better than ± 0.7 °C (± 1.3 °F) for -50 °C to -20 °C (-58 °F to -4 °F) Better than ± 0.7 °C (± 1.3 °F) for +10 °C to +30 °C (+50 °F to +86 °F) Better than ± 1 °C (± 1.8 °F) for -80 °C to -50 °C (-112 °F to -58 °F) Better than ± 1 °C (± 1.8 °F) for +30 °C to +40 °C (+86 °F to +104 °F) Better than ± 1.8 °C (± 3.2 °F) for -90 °C to -80 °C (-130 °F to -112 °F) Actual performance is typically much better than the rated values Accuracy figures can be improved by recalibration
Temperature Resolution	0.1 °C (0.2 °F) for measurements -80 °C to 0° C (-112 °F to +32 °F) 0.2 °C (0.4 °F) for measurements 0 °C to +18 °C (+32 °F to +64.4 °F) 0.2 °C (0.4 °F) for measurements -90 °C to -80 °C (-130 °F to -112 °F) 0.3 °C (0.5 °F) for measurements +18 °C to +30 °C (+64.4 °F to +86 °F) 0.5 °C (0.9 °F) for measurements +30 °C to +40 °C (+86 °F to +104 °F) LogTag Analyzer® currently displays to one decimal place of °C or °F. The native resolution is what is stored in the LogTag®
Acquisition Interval	Determined by logger, shortest acquisition interval 30 seconds
Sensor Reaction Time	Based on tip, same as for current probes
Environmental	Probe tip: IP68 Probe tip/cable junction: IP64 Signal conditioning: IP44
Power Source	CR2032 3V LiMnO2 Battery (distributor replaceable)
Connection Interface	Single wire digital interface to compatible loggers
Battery Life	1 year storage, followed by 3 years of normal use (based on 5 minute logging)
Weight	34g
Signal Conditioning Case Material	Polycarbonate
Tip Material	Stainless Steel 316
Probe Tip Length	22.5mm exposed tip
Probe Tip Diameter	5mm
Smart Probe Dimensions	32.5mm (H) x 46.3mm (W) x 12.5mm (D)
Cable Material	PTFE

