

CALIBRATABLE REPLACEABLE SMART PROBE



LogTag®

Smart Probe
CP100/CP110



The LogTag® CP100 & CP110 is a precise and reliable probe that can be swapped out and calibrated separately from the logger.

This probe can be inserted into a compatible logger without having to return or relocate the logger. Once the probe calibration period ends, the plug-and-play hot-swappable design allows users to interchange the probe easily. The expired probe can be sent to a calibration lab for re-calibration to ensure continuous logging without any interruptions.

The CP100 Smart Probe is compatible with the UTRED30-16 Dual-Channel logger and the UTRED30-WiFi Dual-Channel logger. The CP110 Smart Probe is compatible with the TRED30-16R logger.

Features



Plug-and-play hot-swappable calibratable probe without the need to take or remove the loggers from current locations.



Calibratable probe without the need to take or remove the loggers from current locations.



Battery life of 3-years.



High quality gold plated MCX connector.

Compatible probes below:

Logger Model	1.5m Smart Probe	3m Smart Probe
UTRED30-16 Dual-Channel	CP100K-15	CP100K-30
UTRED30-WiFi Dual-Channel	CP100K-15	CP100K-30
TRED30-16CP	CP110K-15	CP110K-30
TRED30-16U	CP100K-15	CP100K-30
UTREL30-16 Dual-Channel	CP10S-15	CP10S-30
UTREL30-WiFi Dual-Channel	CP10S-15	CP10S-30
TREL30-16CP	CP11S-15	CP11S-30
TREL30-16U	CP10S-15	CP10S-30

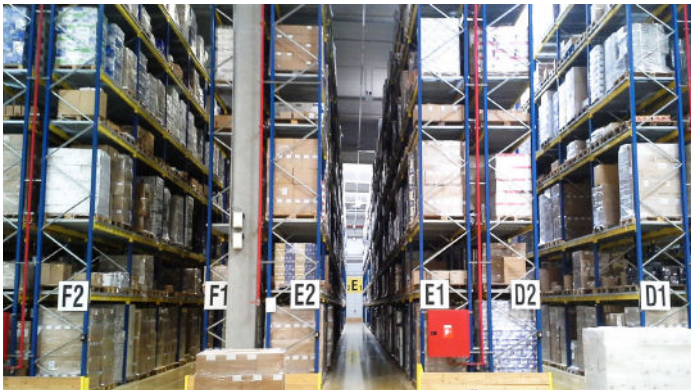
Applications



Laboratories



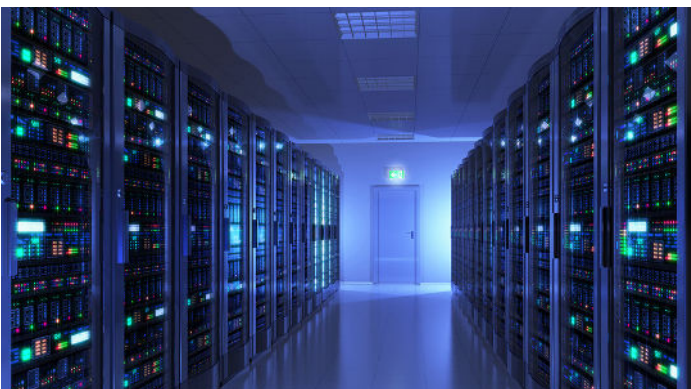
Pharmaceutical & Vaccine



Warehouse



Cold Room



Server Room



Clinics

Specifications

Product Model	CP100/CP110
Temperature Measurement Range	-40 °C to +99 °C (-40 °F to +210 °F)
Temperature Operating Range, Probe End	-40 °C to +99 °C (-40 °F to +210 °F)
Temperature Operating Range, Signal Conditioning End	-20 °C to +70 °C (-4 °F to +158 °F)
Humidity Operating Range	0 %RH to 100 %RH (non-condensing)
Humidity Storage Range	20 %RH to 60 %RH
Rated Temperature Reading Accuracy	Better than ± 0.5 °C (± 0.9 °F) for -20 °C to +40 °C (-4 °F to +104 °F), typically ± 0.3 °C (0.6 °F) Better than ± 0.8 °C (± 1.4 °F) for -40 °C to -20 °C (-40 °F to -4 °F), typically ± 0.5 °C (0.9 °F) and for +40 °C to +70 °C (+104 °F to +158 °F), typically ± 0.7 °C (1.3 °F) Better than ± 1.2 °C (± 2.2 °F) for +70 °C to +99 °C (+158 °F to +210 °F), typically ± 1 °C (1.8 °F)
Temperature Resolution	0.1 °C (0.2 °F) for measurements -40 °C to +50 °C (-40 °F to +122 °F) 0.2 °C (0.4 °F) for measurements +50 °C to +70 °C (+122 °F to +158 °F) 0.3 °C (0.5 °F) for measurements +70 °C to +80 °C (+158 °F to +176 °F) 0.4 °C-0.6 °C (0.7 °F to 1 °F) for measurements +80 °C to +99 °C (+176 °F to +210 °F)
Acquisition Interval	Determined by logger, shortest acquisition interval 30 seconds
Sensor Reaction Time	Based on tip, same as for current probes
Environmental	Probe tip: IP68 Probe tip/cable junction: IP64 Signal conditioning: IP44
Power Source	CR2032 3V LiMnO2 Battery (distributor-replaceable)
Connection Interface	1-wire digital interface to compatible loggers
Battery Life	1 year storage, followed by 3 years of normal use (based on 5 minute logging).
Weight	34g
Signal Conditioning Case Material	Polycarbonate
Tip Material	Stainless Steel 316
Cable Material	PTFE



<p style="font-size: small; margin: 0;">Solutions for High-Tech Instrumentation</p> <p style="font-size: x-small; margin: 0;">www.wessexpower.co.uk</p>	<p style="font-size: small; margin: 0;">E-commerce Instrumentation</p> <p style="font-size: x-small; margin: 0;">www.loggershop.co.uk</p>
Telephone +44(0)1929 459 459	Email sales@WPLS.co.uk